



Bioanalysis  
ZONE



World Alzheimer's Month  
2023





# Contents

---

## FOREWORD

The significance of bioanalytical research on the progress of Alzheimer's treatment and diagnosis

## EDITOR'S NOTES

Five key journal articles on Alzheimer's disease and biomarkers

## INFOGRAPHIC

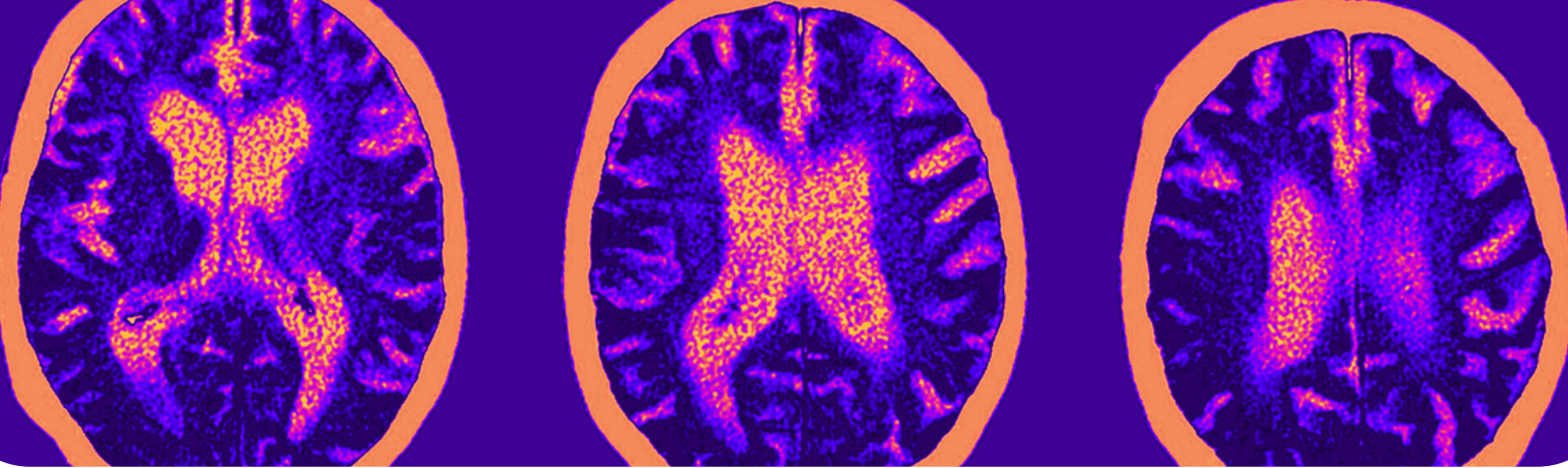
Biomarker and Alzheimer's disease: role of high sensitivity assays and the applications

## REVIEW

Next-generation biomarker discovery in Alzheimer's disease using metabolomics - from animal to human studies

## EDITORIAL

Metabolic profiling in the arena of gut-brain interaction studies for Alzheimer's disease



## Foreword

Alzheimer's disease has notoriously been difficult to diagnose in its earliest stages, with a confident diagnosis typically only being confirmed posthumously. However, recent studies are increasingly finding evidence within the body of various indicators that may contribute to the development of Alzheimer's disease.

To mark World Alzheimer's Month 2023, we have compiled resources from *Bioanalysis* and Bioanalysis Zone focused on Alzheimer's disease to highlight the significant strides that have been made in order to reach definitive diagnosis in living individuals as well as improving treatment for current patients.

In this eBook, we explore how the diagnosis of Alzheimer's disease has entered the era of biomarkers and the significance of gut-brain interactions to Alzheimer's.

We hope you enjoy this eBook!



**Amy White**

Editor, Bioanalysis Zone  
[a.white@future-science-group.com](mailto:a.white@future-science-group.com)

## Top 5 journal articles on Alzheimer's disease and biomarkers

28 FEB 2023 | WRITTEN BY AMY WHITE

**BIOMARKERS** | **GENERAL INTEREST**



Alzheimer's disease has notoriously been difficult to diagnose in its earliest stages, with a confident diagnosis typically only being confirmed posthumously. However, recent studies are increasingly finding biomarkers linked to Alzheimer's symptoms, thus furthering the progress to an early diagnosis in patients. Here, we take a look at some of the most-read articles on biomarkers and Alzheimer's disease, according to Altmetrics.

### **High performance plasma amyloid- $\beta$ biomarkers for Alzheimer's disease**

In this article, published by *Nature*, Akinori Nakamura, Naoki Kaneko, Victor L. Villemagne *et al.* highlight their findings on the measurement of high-performance plasma amyloid- $\beta$  biomarkers, as they aim to find a minimally invasive, cost-effective blood-based biomarker to aid clinical trials of disease-modifying therapies for Alzheimer's disease in its earliest and mildest stages. Signs of amyloid- $\beta$  deposition in the brain are one of the earliest pathological indicators of Alzheimer's disease but the only validated methods of

identifying this is through amyloid- $\beta$  positron-emission tomography (PET) imaging or measurement of amyloid- $\beta$  in cerebrospinal fluid.

### **Brain-derived tau: a novel blood-based biomarker for Alzheimer's disease-type neurodegeneration**

Brain-derived tau (BD-tau), to the date of this study, outperforms current blood diagnostic tests used to find Alzheimer's-related neurodegeneration, as it is specific to Alzheimer's and correlates better with Alzheimer's neurodegeneration biomarkers. The researchers of this study aimed to evaluate the effectiveness of monitoring the blood levels of BD-tau in order to help improve clinical trial design and facilitate screening and enrollment of patients from underrepresented populations that aren't typically included in research cohorts.

### **Alzheimer's Disease Susceptibility Gene Apolipoprotein E (APOE) and Blood Biomarkers in UK Biobank (N = 395,769)**

The cause of Alzheimer's disease is still undefined. However, there is the potential for the gene apolipoprotein E (APOE), which is a major genetic risk factor for Alzheimer's disease, to have an influence on common blood biomarkers. Thus, this research team sought to investigate blood biomarkers in the context of APOE genotype in order to gain a greater understanding of the workings of Alzheimer's and dementia risks. This study, published by the *Journal of Alzheimer's Disease*, also aimed to conduct the largest (to date of the study) single-protocol investigation of blood biomarkers, in collaboration with UK Biobank, to find a correlation.

### **Plasma biomarker profiles in autosomal dominant Alzheimer's disease**

Researchers are constantly making the effort to find non-invasive methods for Alzheimer's diagnosis, as immunoassays and mass spectrometry methods, commonly used for final diagnosis, require specific samples from the patients which can be invasive when retrieving antibodies for testing. In this study, published in *Brain*, researchers sought to investigate the timing and performance of emerging plasma biomarkers in mutation carriers compared to non-carriers in autosomal dominant Alzheimer's disease to see if they could be effective tools to trace early Alzheimer's disease-related abnormalities in a non-invasive way.

### **Estimation of lifetime risks of Alzheimer's disease dementia using biomarkers for preclinical disease**

In this study, researchers Ron Brookmeyer and Nada Abdalla, from the University of California (USA), investigated the potential first indicators of lifetime and ten-year risks of Alzheimer's disease dementia based on tests for preclinical disease focused on age, gender and biomarkers. Lifetime risks are significant as they are probable estimates of developing Alzheimer's disease dementia during an individual's lifespan.

---

## References

1. Nakamura A, Kaneko N, Villemagne V. *et al.* High performance plasma amyloid- $\beta$  biomarkers for Alzheimer's disease. *Nature*. 554, 249–254, doi: 10.1038/nature25456 (2018)
2. Fernando Gonzalez-Ortiz, Michael Turton, Przemysław R Kac. *et al.* Brain-derived tau: a novel blood-based biomarker for Alzheimer's disease-type neurodegeneration. *Brain*. 1-14 doi: 10.1093/brain/awac407 (2022)
3. Ferguson A, Tank R, Lyall L. *et al.* Alzheimer's Disease Susceptibility Gene Apolipoprotein E (APOE) and Blood Biomarkers in UK Biobank (N=395,769). *Journal of Alzheimer's Disease*. 1541 – 1551 doi: 10.3233/JAD-200338 (2020)
4. Johansson C, Thordardottir S, Laffita-Mesa J. *et al.* Plasma biomarker profiles in autosomal dominant Alzheimer's disease. *Brain*. 1-9, doi:10.1093/brain/awac399 (2023)
5. Brookmeyer R and Abdalla N. Estimation of lifetime risks of Alzheimer's disease dementia using biomarkers for preclinical disease. *Alzheimer's & Dementia*. (14) 981-988, doi: 10.1016/j.jalz.2018.03.005 (2018)

# Biomarker and Alzheimer's disease

The role of high sensitivity assays and the applications

## What is Alzheimer's disease?

Alzheimer's disease is a devastating neurodegenerative disease and the only one of the top 10 deadly diseases that has almost no treatment.

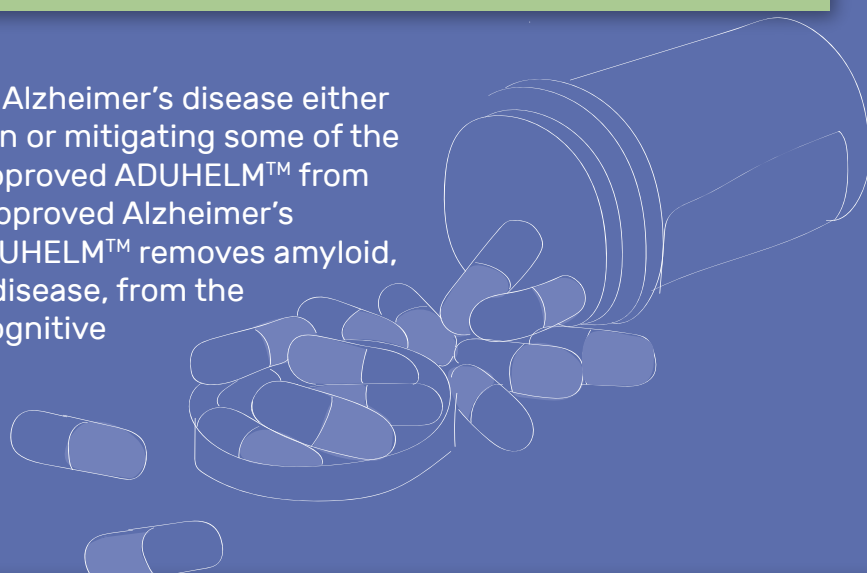


## Diagnosis

Currently, levels of biomarkers such as beta-amyloid and tau, are assessed in the CSF by brain imaging technologies, for early detection of Alzheimer's disease.

## Current treatments

The current FDA approved drugs for Alzheimer's disease either focus on slowing disease progression or mitigating some of the symptoms. Recently, the FDA has approved ADUHELM™ from Biogen (MA, USA) in 2021, the first approved Alzheimer's treatment in the past 2 decades. ADUHELM™ removes amyloid, one of the hallmarks of Alzheimer's disease, from the brain. It is believed to help reduce cognitive and functional decline in people with early Alzheimer's.

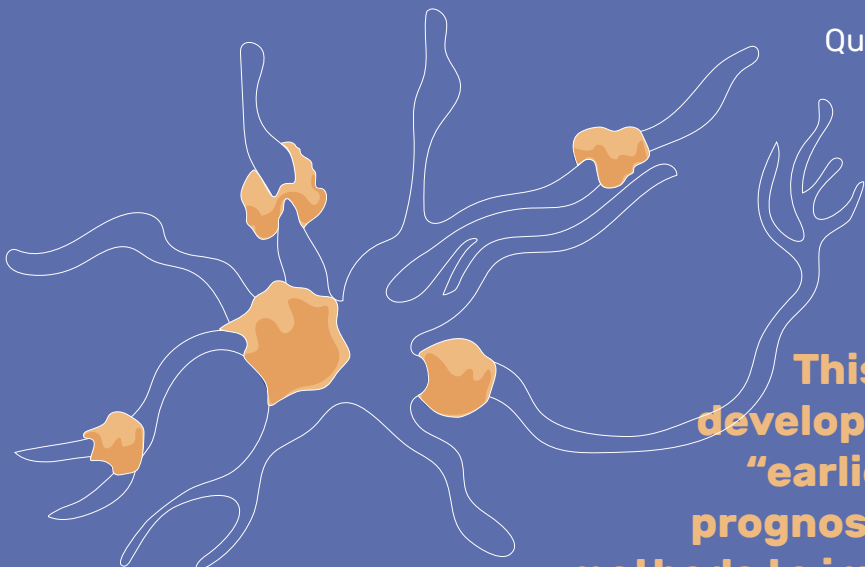


## Development and validation of protein biomarker assays

Thanks to various new technologies, diagnostic capabilities have advanced further. High sensitivity technologies and platforms help enable early diagnostics. With this, the diagnostic of Alzheimer's disease enters the era of biomarkers, with the current biomarkers being amyloids and taus. Highly sensitive protein biomarker assays can be used for elevating diagnostic capabilities for Alzheimer's disease.



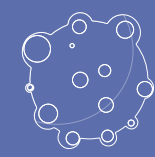
## High sensitivity assay platforms and the future of diagnostics



Quanterix's Simoa® (single molecular array) technology can measure biomarkers at significantly lower levels. This is advantageous for researchers in examining particularly critical biomarkers or small samples.

**This technology also allows the development of methods to provide "earlier disease detection, better prognoses and enhanced treatment methods to improve the quality of life and longevity of the population for generations to come."**  
- Quanterix (MA, USA)

Currently, Simoa is used for applications in:



Oncology



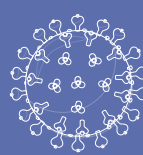
Neurology



Cardiology



Inflammation

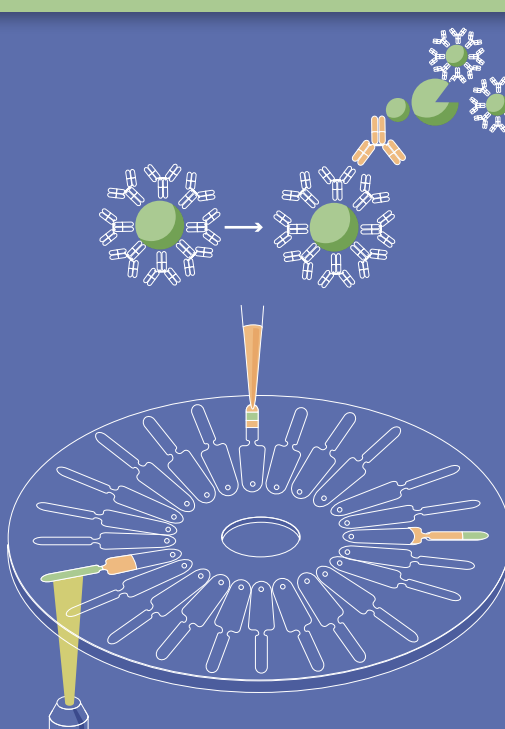


Infectious disease

Particularly for Alzheimer's disease, Simoa can detect neurological biomarkers, such as tau, at ultra-low levels, which in the past have only been detectable in CSF. The launch of this new technology has accelerated capabilities for detection and diagnostics.

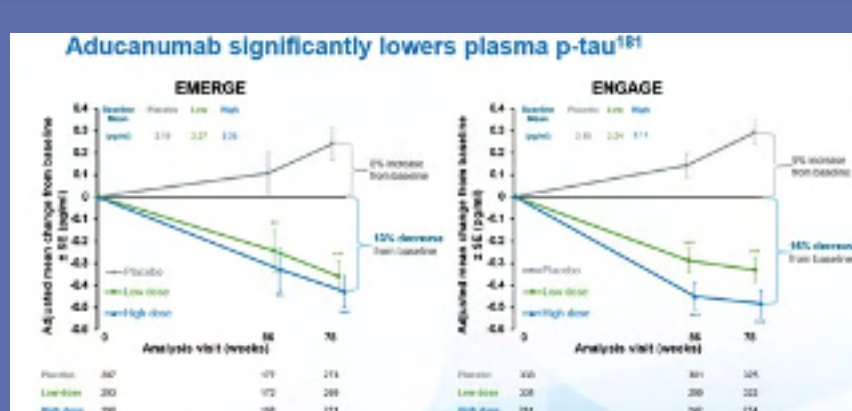
## Simoa technology

Simoa is a bead-based technology that isolates each bead-immunocomplex. It allows for the enzyme bound to the capture antibody to produce enough fluorescence in each well to be detectable, even when only a single molecule is present. Each array contains more than 200,000 microwells, which are digitally analyzed as 'on' or 'off' based on the capture of the target molecule. The wells on the Simoa disc are loaded,



## Case study

P-tau 181 is recognized as an important biomarker for Alzheimer's disease. Frontage validated this assay in-house under CLIA using a ~7000 sample study and the Quanterix Simoa p-tau181 advantage V2 kit. The study participants were analyzed at baseline and week 78. The results showed that the lower limit of quantification of the assay is around 0.5 pg/mL with more than 95% of samples being within range.



This infographic has been created as part of a Bioanalysis Zone feature in association with Frontage.

# Next-generation biomarker discovery in Alzheimer's disease using metabolomics – from animal to human studies

Marina Ollé Hurtado<sup>1</sup>, Isabelle Kohler<sup>1</sup> & Elizabeth CM de Lange<sup>\*,1</sup>

<sup>1</sup>Leiden Academic Centre for Drug Research, Division of Systems Biomedicine & Pharmacology, Leiden University, Leiden, The Netherlands

\*Author for correspondence: [ecmdelange@lacdr.leidenuniv.nl](mailto:ecmdelange@lacdr.leidenuniv.nl)

Alzheimer's disease (AD) is a complex disease driven mainly by neuronal loss due to accumulation of intracellular neurofibrillary tangles and amyloid  $\beta$  aggregates in the brain. The diagnosis of AD currently relies on clinical symptoms while the disease can only be confirmed at autopsy. The few available biomarkers allowing for diagnosis are typically detected many years after the onset of the disease. New diagnostic approaches, particularly in easily-accessible biofluids, are essential. By providing an exhaustive information of the phenotype, metabolomics is an ideal approach for identification of new biomarkers. This review investigates the current position of metabolomics in the field of AD research, focusing on animal and human studies, and discusses the improvements carried out over the past decade.

First draft submitted: 18 May 2018; Accepted for publication: 25 July 2018; Published online: 10 September 2018

**Keywords:** Alzheimer's disease • biomarker • dementia • lipidomics • mass spectrometry • metabolomics • mild cognitive impairment • untargeted metabolomics

Neurodegenerative disorders include a broad range of diseases characterized by progressive loss of neurological functions, such as Parkinson's disease (PD), Alzheimer's disease (AD) and amyotrophic lateral sclerosis (ALS), showing the highest incidence in the worldwide population [1,2]. AD, the most prevalent neurodegenerative disorder, is the best-known form of late-life mental failure in humans, and its incidence is expected to be triplicated over the next 50 years [3]. This complex disorder involves progressive conditions such as memory loss, behavioral disorder, impairment of cognitive and motor functions, and a complete loss of self-sufficiency in the final stage [4]. AD affects central nervous system (CNS) leading to atrophy of brain cortex, especially in the neocortex and hippocampus areas which are related to superior mental functions. The pathophysiological changes in patients suffering from AD begin many years before the onset of dementia and cognitive decline, and the speed of mental deterioration varies among patients. The hallmarks of AD include the presence of intraneuronal neurofibrillary tau tangles (NFTs) composed of hyper-phosphorylated and aggregated tau proteins; extracellular  $\beta$ -amyloid plaques formed by amyloid  $\beta$  ( $A\beta$ ) peptide aggregates; and synapses loss. These structures are the cause of biochemical alterations in AD brain, leading to neuronal dysfunction and death [3]. Oxidative stress, lipid dysregulation and inflammation also play essential roles in AD brain alterations. Altogether, these biochemical alterations lead to unspecific symptoms that start with cognitive deficits to remember autobiographical events specific to a place and time [5–9], followed by damages in long-term memory and alteration of ordinary capacities of attention and semantic memory as the illness progresses to other brain areas, leading to dementia [10].

## Disease classification

The majority of AD cases, up to 95%, are classified as sporadic (sAD), with no familial genetic risk factors. sAD typically begins after the age of 60 with a linear increase of the risk of developing it with age, therefore referred to as late-onset AD [11]. Late-onset AD, also known as type 2 AD, is characterized by complex interactions between genetics and environment with a strong genetic association with polymorphisms in the  $\epsilon 4$  allele of the apolipoprotein



E (APOE) gene [11]. The human *APOE* gene exists as three polymorphic alleles, namely,  $\epsilon 2$ ,  $\epsilon 3$  and  $\epsilon 4$ . ApoE protein is highly expressed in the liver and the brain, although lower levels can be found in several other organs. In the brain, *APOE* is mostly expressed in astrocytes, that transport cholesterol to neurons via ApoE receptors, which are members of the low-density lipoprotein receptors [12]. ApoE lipoprotein plays a crucial role in regulation of triglyceride metabolism throughout the body and cholesterol metabolism in the brain. It is implicated in amyloid trafficking and plaque clearance [13]. ApoE  $\epsilon 4$  allele is the strongest genetic risk factor for sAD with an increased frequency (up to 40%) of the  $\epsilon 4$  allele in AD patients and, although the mechanisms underlying ApoE influence on AD progression remain not fully understood yet, this allele enhances A $\beta$  deposition into plaques and reduces clearance of A $\beta$  from the brain in a gene dose-dependent manner [14]. AD frequency has also shown to be higher in APOE  $\epsilon 4$  homozygous subjects compared with heterozygous ones [15]. Furthermore, APOE  $\epsilon 4$  homozygous subjects present an earlier mean age of clinical onset of AD compared with heterozygous cases (68 years of age vs 76) [15], which might be explained by an impaired delivery of cholesterol from astrocytes to neurons, causing an increment of cholesterol concentration in neurons leading to an induction of A $\beta_{42}$  accumulation through the  $\beta$ -secretase pathway [16]. It has been also recently shown in mice that APOE  $\epsilon 4$  also affects tau pathogenesis and tau-mediated neurodegeneration independently of A $\beta$  pathology [17]. On the contrary, the  $\epsilon 2$  allele decreases the risk of developing the disease via protective effects against both late-onset and familial AD [18–20].

About 1–5% of AD cases have a genetic disposition following Mendelian disease transmission patterns, referred to as autosomal-dominant familial AD (fAD). In contrast to sAD, this early-onset AD typically occurs earlier in life with some cases diagnosed at 35 years old [11]. In humans, the genetic factors associated with fAD so far identified are the presence of mutations in the  $\beta$ -amyloid precursor protein (*APP*) gene or in genes involved in APP processes, such as presenilin 1 (*PSEN1*) or presenilin 2 (*PSEN2*) [21]. Mutations in these genes cause a dysfunctional metabolism of APP in the brain, leading to an accumulation of A $\beta$  and soluble APP, and causing amyloid plaques formation. Depending on the gene mutated, fAD can be divided into three different types. Type 1 AD is caused by mutations in the *APP* gene and is responsible for 15% of all early-onset fAD cases. Mutations in *PSEN1* or *PSEN2* account for type 3 AD and type 4 AD, representing 70 and 5% of all early-onset AD cases, respectively.

### Causes of AD

Even though research in AD field has grown exponentially in the past two decades, the causes of this disease are not yet fully known, making difficult the development of optimal treatments to delay the onset and progression of the disease [22]. The two most prominent hypotheses to explain AD are the amyloid cascade hypothesis [23] and the neuronal cytoskeleton degeneration hypothesis involving tau hyperphosphorylation [24]. According to Hardy and Higgins [23], accumulation of A $\beta$  peptide in the brain is the primary cause of AD. A $\beta$  is a product of the APP metabolism. Different A $\beta$  species exist, notably the ones ending at position 40 (A $\beta_{40}$ ) and 42 (A $\beta_{42}$ ). The longer forms of A $\beta$ , particularly A $\beta_{42}$ , are more hydrophobic and fibrillogenic, therefore prone to deposit in the brain. Mutations in the *APP* gene favor the proteolytic processing of APP by  $\beta$ - and  $\gamma$ -secretases, increasing the concentration of A $\beta$  in brain [25]. A $\beta$  tends to self-aggregate forming senile plaques, known as well as neuritic plaques or A $\beta$  plaques, which lead to neural injury prior to neuronal death [26]. Besides of the A $\beta$  plaque formation, other factors may also account for AD progression, such as dysfunctions in tau phosphorylation, vascular risk factors and blood–brain barrier (BBB) dysfunctions, which impair A $\beta$  clearance from the brain [27]. According to Braak and Braak [24], cytoskeletal changes such as the abnormal phosphorylation of the microtubule-associated protein tau precede the deposition of amyloid plaques. Under pathological conditions, the amount of hyperphosphorylated tau increases, leading to tau aggregation. In consequence, tau affinity for microtubules is reduced, affecting neuronal plasticity and causing neurodegeneration [28].

In more recent years, increased evidence points to the concomitant action of tau and soluble forms of A $\beta$  toward diseased neurons. Furthermore, characteristic toxic properties of the A $\beta$  peptide require the presence of tau. Brain A $\beta$  accumulation (amyloidosis) is an upstream event of tauopathy in the AD pathway and A $\beta$  is responsible for the conversion from normal tau to hyperphosphorylated tau, which is the toxic form of this protein [29]. However, some studies demonstrate that the toxic state of tau enhances A $\beta$  toxicity via a feedback loop. Some cellular processes such as neuron death or synaptic dysfunction are caused by soluble A $\beta$  and depend on soluble tau. Soluble forms of these proteins can aggregate and self-propagate throughout the brain by prion-like mechanisms [30].

## Stages of AD

In AD pathology, a series of biological processes begin years ahead of the emergence of clinically evident impairment in cognition. This relatively long asymptomatic period is referred to as preclinical phase and is divided into three stages [31]. Not all the individuals included in these three preclinical stages will progress to dementia [31]. Indeed, some individuals may present all the neuropathological features of AD at autopsy without having ever expressed clinical dementia symptoms during their life. This highlights the existence of possible factors that give resistance to further progression of AD, such as protective genetic factors, environmental influences, and cognitive or brain reserve. Brain reserve represents the capacity of the brain to withstand pathological insult, whereas cognitive reserve is the ability to engage alternate brain networks to cope with the effects of encroaching pathology [31].

The link between the pathophysiological process of AD and the emergence of the clinical symptomatology has not been elucidated yet. Nevertheless, several studies have already provided preliminary evidence that abnormalities consistent with AD pathophysiological processes are detectable before the emergence of clinical symptomatology via detection of specific biomarkers, which might therefore be predictive of subsequent cognitive decline. Recent studies have typically focused on the accumulation of A $\beta$  before the appearance of clinical symptoms, which is essential but not sufficient to produce clinical symptoms. Also, the presence of one or two APOE  $\epsilon$ 4 alleles is being studied as a genetic biomarker since  $\epsilon$ 4 alleles are linked to an increased risk of developing AD dementia [31].

Mild cognitive impairment (MCI) is an intermediate phase in the development of AD compared with normal aging, but not severe enough to interfere notably in daily-life activities to fulfill the criteria of dementia. This phase is defined by cognitive impairment, mainly in memory functions, and subjects suffering from MCI appear more like AD patients than subjects with memory failure as part of aging [32]. The conversion rate of MCI patients toward AD is difficult to estimate and prone to large variability depending on the studies, also because different diagnostic criteria have been applied for MCI in the literature [33].

Moreover, AD is not the only possible evolution of MCI, since several outcomes, including recovery to normal cognition, are possible [34]. No valid method for estimating the conversion rate of MCI to AD is currently available, logically representing one of the major focuses of MCI research today [35]. Finally, the amount of clinical trials performed over the last years with patients at MCI stage has substantially increased as it is believed that pharmacological intervention at an earlier AD stage is a key factor to possibly delay or even prevent the evolution of MCI to dementia [36,37].

## Diagnosis of AD

The current diagnosis of AD is mainly based on clinical investigation, including physical and neurological criteria, medical history and laboratory tests for potential biomarkers. These clinical parameters allow for a prediction of AD with an accuracy rate of >90%. However, a definitive diagnosis can only be assessed post-mortem, based on the presence of tangles and plaques in the brain [38]. The current clinical diagnostic approach remains time-consuming and is based on the exclusion of other neurologic and psychiatric disorders. Current diagnosis biomarkers include the ratio between total A $\beta$  peptide and tau protein in cerebrospinal fluid (CSF) combined with brain imaging techniques, which represents a very costly approach and is not sensitive enough at the earlier stages of the disease [27].

An important challenge in AD diagnosis is that the current approaches are only capable of identifying patients at advanced stages of the disease, once the dementia is already present. This highlights the need for innovative approaches allowing for the diagnosis of AD at earlier stages of the disease, before appearance of the symptoms. The discovery of such biomarkers would also certainly help in enabling a reliable determination of the conversion rate from MCI to AD in affected patients [39]. In this context, omics-based approaches, including genomics, transcriptomics, proteomics and metabolomics can play an essential role. Notably, metabolomics-based techniques are considered promising in the determination of novel biomarkers or metabolic pathways altered in AD, and for a better understanding of the mechanisms underlying AD pathophysiology.

## Genome- & proteome-derived biomarkers

### Biomarkers in CSF

CSF plays an important protective role in the CNS and is responsible for transporting nutrients to maintain homeostasis of neuronal cells. CSF composition closely reflects the brain extracellular space composition and is therefore related to metabolic processes occurring in the brain [40]. Hence, CSF is very attractive for the discovery of new biomarkers in AD research, where various compounds, mostly proteins or polypeptides, have been already

shown to be associated to AD. Notably, increased levels of total tau and phospho-tau-181 (pTau) in CSF, measured by ELISA, currently represent the most accepted and validated biomarkers so far [38].

Tau protein, a brain-specific microtubule-associated protein, is important in the progression of AD as it is responsible for the formation of NFTs. In healthy subjects, CSF-tau levels increase with age, being approximately 130 pg/mL in 21–50 years-old subjects, increasing up to threefold until approximately 340 pg/mL in subjects older than 71 years old. In AD patients, tau levels are significantly increased, with a cut-off concentration of  $\geq 600$  pg/mL [38,41]. Moreover, CSF-tau levels might also be relevant to determine the progression of MCI patients into dementia, as 90% of MCI patients that finally progressed to dementia have shown significantly higher tau levels in CSF compared with MCI-stable subjects [42].

Phosphorylated tau (pTau) is a fraction of total tau, and thus a characteristic component of NFTs. In AD, tau protein can be hyperphosphorylated in 39 possible sites, resulting in a loss of protein functionality that eventually leads to a dysfunction of axonal transport. Tau phosphorylation at residue 181 is one of the mainly occurring tau isoforms found in NFTs, with levels significantly higher in patients with AD compared with nondemential subjects [43].

In addition to tau and phospho-tau levels, reduced levels of  $A\beta_{42}$  in CSF determined using ELISA have also been recognized as a well-established analysis [44]. Levels of  $A\beta_{42}$  in CSF AD are typically lower than 500 pg/mL, whereas non-dementia subjects present higher levels (ca. 800 pg/mL) [41]. The decrease in  $A\beta_{42}$  levels is mainly due to enhanced aggregation and plaque formation in AD brain, as well as reduced clearance of  $A\beta$  from the brain to the CSF [38]. It is worth mentioning that only the combination of these three CSF biomarkers significantly increases the efficacy and accuracy of the diagnosis of sAD [45].

Despite the abundant research that has been carried out over the last years to find new biomarkers in CSF, no other protein or polypeptide has been validated for clinical use. For instance, CSF levels of nerve growth factor (NGF), affecting cholinergic transmission, have been shown to be significantly higher in AD patients compared with healthy subjects, indicating accumulation of NGF in the brain of AD patients [46]. However, NGF levels are too low to be detected with sufficient sensitivity with current techniques, hampering its use as biomarker [47].

### Blood-derived biomarkers

Compared with CSF, blood is easily collected and therefore represents the matrix of choice for the discovery of new and easily-accessible biomarkers. Indeed, despite the presence of the BBB, the peripheral circulation is also expected to transport compounds that may reflect the brain (patho)physiology.

Logically, the first attempts in finding blood-based biomarkers were focused on  $A\beta_{42}$  levels [48]. Different conclusions have been drawn on the evolution of  $A\beta_{42}$  plasma concentration, where some studies showed an increase in  $A\beta_{42}$  levels in familial AD patients with *APP* or presenilin mutations [49] while others did not find any significant differences in  $A\beta$  plasma concentrations among groups, rendering the use of plasma  $A\beta$  levels inaccurate for the diagnosis of sAD [48]. Multiple hypotheses have been raised to explain the diversity in  $A\beta_{42}$  levels, in other words, the influence of therapies, such as insulin treatments, which considerably influence  $A\beta$  expression; the fact that  $A\beta$  levels might differ in the different stages of AD and among subjects; other potential sources of  $A\beta$  production, such as platelets, contribute to the total plasma  $A\beta$  levels; and  $A\beta$  binds to other proteins, rendering its detection as a free form not straightforward [38].

Similar to  $A\beta$  levels, enzymes related to tau pathology have been also evaluated as possible AD plasma biomarkers. For instance, glycogen synthase kinase-3 (GSK-3), involved in tau hyperphosphorylation, has been reported to be significantly increased in both AD and MCI white blood cells compared with controls, suggesting that GSK-3 dysregulation occurs in early stages of AD pathogenesis [50]. In contrast, reduced GSK-3 levels in peripheral-blood mononuclear cells have been reported in patients with MCI. These opposite conclusions highlight the difficulty in using GSK-3 as a biomarker for AD diagnosis [51].

APOE  $\epsilon 4$  allele is known to be the main risk factor for sAD and is associated with increased risk of amyloid plaques. However, no consistent correlation between AD and plasma apoE levels has been reached so far, since some studies have documented reduced levels [52,53], elevated levels [54], or no difference compared with controls [55]. When studying the levels of ApoE in CSF, results are also inconclusive. On one side, a study carried by Hesse *et al.* showed that higher levels of ApoE in CSF were found in individuals that possessed the ApoE  $\epsilon 4$  alleles, both in the AD and in the control group [56]. On the other side, Cruchaga *et al.* found that ApoE levels in CSF were correlated with  $A\beta_{42}$  levels and clinical dementia rating, but were independent of the APOE genotype [55].

**Table 1. Most investigated and characterized biomarkers for Alzheimer's disease.**

Biomarker	Sample	Levels compared with controls	Use in clinics	Ref.
Tau	CSF	Increased	Yes	[42]
pTau	CSF	Increased	Yes	[43]
A $\beta$ <sub>42</sub>	CSF	Decreased	Yes	[41]
A $\beta$ <sub>40</sub> and A $\beta$ <sub>42</sub>	Plasma	Increased in fAD/no changes in sAD	No	[48,49]
GSK-3	Plasma	Increased in AD and MCI/reduced in MCI	No	[50,51]
apoE	Plasma	Inconsistent	No	[52–55]
IL-6	Plasma	Inconsistent	No	[57]
IL-12, IFN- $\alpha$ and IFN- $\beta$	Plasma	No changes	No	[57]
Plaques (A $\beta$ )	Post-mortem tissue	Increased	Yes	[38]
NFT (tau)	Post-mortem tissue	Increased	Yes	[38]

Only CSF biomarkers and post-mortem analysis are currently used in clinics.  
A $\beta$ : Amyloid  $\beta$ ; CSF: Cerebrospinal fluid; NFT: Neurofibrillary tau tangle.

Finally, AD has a strong inflammatory component. A $\beta$  deposition in the AD brain triggers a broad range of inflammatory responses which probably contribute to neuronal cell death, explaining why possible inflammation markers in plasma or serum have been also investigated [5]. However, many of these proteins have difficulties in crossing the BBB, limiting the relevance of their plasma levels. Indeed, inflammatory markers such as C-reactive protein, IL-6, TGF- $\beta$ , or IL-1 $\beta$ , among others, show inconsistent results in the literature. On the other hand, IL-12, IFN- $\alpha$  and IFN- $\beta$  blood concentrations have shown to remain unaffected in AD patients relative to control groups [57].

### Post-mortem analysis

To date, the post-mortem analysis of brain tissue currently remains the only approach available to obtain an accurate and definitive diagnostic of AD. In this case, A $\beta$  and tau are stained by immunohistochemistry in order to detect the amyloid plaques and NFTs, respectively. Post-mortem histology can also be used to detect pathological changes in an AD brain or the therapeutic effect of an administered drug against AD progression [38].

### Genome- & proteome-derived biomarkers: limitations

Even though the number of biomarkers investigated for AD has significantly increased over the past years, altogether with the amount of literature published on this subject, only few of them are used in routine to help for AD diagnosis, as listed in Table 1.

Commonly, routine AD diagnosis still relies on the criteria established by the National Institute for Neurological and Communicative Disorders and Stroke/Alzheimer's Disease and Related Disorders Association (NINCDS/ADRDA, now known as Alzheimer's disease Association), which states that only samples obtained by autopsy of the patient can be used for definitive diagnostic [58]. Therefore, the *in vivo* analysis of CSF biomarkers is increasingly considered in routine, focusing on the analysis of A $\beta$ <sub>42</sub>, total tau and phosphor-tau-181, which altogether increase the confidence in the clinical diagnosis. This approach, however, presents some relevant drawbacks. First, CSF collection remains very invasive and prone to risks for the patients, which also renders follow-up analysis of a patient over time very challenging [38]. Moreover, no consensus is currently available concerning the cutoff values for A $\beta$ <sub>42</sub>, tau and pTau CSF levels. Indeed, the diagnostic sensitivities and specificities reported in the literature are strongly dependent on the subjects included and the experimental design, making the definition of standard criteria for the diagnosis of AD very difficult [44]. Typically, considerable difference in CSF concentrations has been observed between laboratories, especially for A $\beta$ <sub>42</sub> levels, even when using the same kit [59]. Standardization in clinical and analytical procedures for measuring A $\beta$ <sub>42</sub>, tau and pTau levels is therefore essential to ensure reproducibility between laboratories and understand the sources of this variability (e.g., inclusion criteria, definition of MCI, sample collection frequency, etc.) [60,61]. Finally, as previously mentioned, increased evidence shows that only the combination of these three biomarkers can lead to sufficient sensitivity and specificity – but not separately [27].

Blood, despite easier to collect compared with CSF, leads to additional challenges since protein-based or polypeptide biomarkers do not easily cross the BBB. This highlights the needs for the discovery of new biomarkers based

on low molecular weight compounds or lipophilic metabolites, which can more easily pass through the BBB, and, therefore, be detectable in blood at sufficient concentrations [5].

It is worth mentioning that the BBB has shown to be altered in AD subjects. On one side, the expression of the proteins in charge of transporting A $\beta$  into blood, named low-density LRP1 and P-glycoprotein (P-gp), are reduced in AD subjects leading to A $\beta$  accumulation due to its poor clearance from the brain. Moreover, A $\beta$  damages its own LRP1-mediated transport by oxidating LRP1 and A $\beta$ <sub>42</sub> downregulates the expression of P-gp and other A $\beta$ -transporters, intensifying the accumulation of A $\beta$  in the brain and accelerating the neurodegeneration in AD. On the other side, expression of the receptor for advanced glycation end products mRNA, a receptor responsible for the influx of circulating A $\beta$  into the brain, has been found to be significantly reduced in mice treated with A $\beta$ <sub>42</sub>. In plasma, the major transport protein for peripheral A $\beta$  is a soluble form of LRP1, which maintains the homeostasis of A $\beta$  levels by inhibiting the reentry of free plasma A $\beta$  into the brain. Thus, A $\beta$  levels can be detected in the blood but are not correlated to the CSF ones [62].

Finally, two important challenges in AD research are the detection of pre-dementia states and the identification of MCI patients who are at risk to progress to dementia. As already mentioned, MCI is an heterogeneous group and it is currently difficult to evaluate the possible conversion from one stage to the following one [63]. Accurate diagnosis of AD in early stages also remains difficult because a variety of neurodegenerative disorders share the same early symptoms, which makes it complicated to discriminate them. Therefore, ideal biomarkers will be able to distinguish between AD and other neurodegenerative disorders, such as vascular dementia, MCI, or Lewy body dementia, which require different treatment approaches [38].

### Next-generation biomarker discovery in AD: metabolomics-based strategies

Metabolomics is defined as the comprehensive analysis of all metabolites (i.e., compounds with a mass lower than 1000 Da) within a cell, tissue or organism and represents an attractive approach to study alterations of the metabolism upon physiological stimuli, genetic alteration, pathogenic factors (immune response) or lifestyle (e.g., diet, physical exercise, smoking habits, gut microbiome, etc.) [13,34]. Together with other omics approaches, metabolomics is expected to play an essential role in implementation of personalized medicine and provide a better understanding of biomolecular mechanisms underlying important diseases, including AD [64,65]. Particularly, metabolomics shows promises in discovering biomarkers that might predict disease progression since the metabolome is evolving along with a specific pathological status [66]. This highlights the importance of such discipline in AD research, where the drive has recently switched towards identifying biomarkers that can predict the rates of cognitive decline and conversion from MCI to AD, rather than identifying markers that distinguish cases versus cognitively normal healthy controls [67]. Finally, metabolomics-based studies are also of relevant help for revealing the pharmacokinetics and pharmacodynamics of drugs in both patients and *in vitro* models [68].

Another useful feature of metabolomics is the possibility of mapping the metabolome in multiple bio-samples, including blood-derived matrices, urine, CSF or tissues. Such diversity is of high relevance in AD research, enabling the comparison of the metabolic profiles between compartments [39]. Ideally, this approach would also allow to decipher if peripheral molecular changes (measured for instance in plasma) are related to alterations in the CNS, or to peripheral metabolism [6].

### Untargeted versus targeted metabolomics

The detection of biomarkers for AD can be accomplished via two different approaches, namely, untargeted and targeted metabolomics [69]. Targeted metabolomics is an *a priori*-based approach relying on the analysis of a restricted number of metabolites that are involved in a specific metabolic pathway or reaction. This approach allows for (semi-)quantitation of known metabolites, for instance already reported in the literature such as cholesterol, lipids or homocysteine [3], but is not suited for the discovery of potential biomarker candidates which remain to be discovered [70].

In contrast to the targeted strategy, untargeted metabolomics approaches allow for the discovery of novel unreported biomarkers through the study of as many metabolites as possible in a biological system [3]. This unbiased approach is particularly interesting in AD, due to the relatively poor knowledge of pathophysiological and metabolic processes occurring in AD brain. As an example, the evolution of the metabolic profile over time can lead to relevant information that can lead to the generation of novel hypotheses about the causes, origin and progression of AD, or the support of previous investigations [70].

Both approaches are typically used sequentially, where molecules of interest are first selected using untargeted metabolomics, followed by more targeted approaches to quantify and confirm the role of the potential biomarker candidates. It is worth mentioning that both strategies also differ significantly in the data analysis workflows. The latter is particularly important in untargeted approaches which typically deal with large number of variables/metabolites in large scale studies, where an adequate data pre-processing and analysis strategy is essential to draw significant conclusions. The differences between targeted and untargeted metabolomics and their respective challenges have been extensively reviewed, for instance by Kohler *et al.* [71].

In AD research, a lot of the reported results have been gathered using targeted approaches that allow for the (semi-)quantification of specific compounds suspected to play a role in the disease, mostly oxidative stress markers, biogenic amines, oxylipins and other lipid mediators, and this based on the previous knowledge available on the pathophysiological mechanisms involved in AD. On the other hand, the untargeted approaches reported so far did not lead to the discovery of novel biomarkers, and failed in highlighting the connectivity between the different biochemical pathways that drive AD pathology [70].

### State-of-the-art analytical techniques

State-of-the-art metabolomics relies on two complementary analytical strategies, namely, nuclear magnetic resonance spectroscopy (NMR) and mass spectrometry (MS)-based techniques [72]. Due to multiple technological development carried out in the past decades in both techniques together with the development of advanced data analysis methods, the coverage of the metabolome has been significantly extended [73].

NMR is a largely used technique which allows for simultaneous identification and quantitation of metabolites from complex mixtures [13], since the peak area measured on an NMR spectrum is linearly related to the number of nuclei in the sample, and thus the metabolite concentration [71]. NMR presents some advantages, such as nondestruction of the samples, the requirement of a minimal sample preparation before the analysis, short analytical run times and detection of metabolites presenting a large diversity in their physicochemical properties within a single run [72]. The main limitation of NMR is its relatively low sensitivity compared with MS-based techniques, which can be improved by using strong superconductive magnets and cryoprobes to reduce the electronic noise [71]. Other common drawbacks include high costs, low performance in lipid analysis, pH-dependent chemical shifts and signal suppression in the presence of water [71,73]. Up-to-date, the number of NMR studies in AD is still rather limited, as listed in Tables 2–6.

MS is commonly coupled to separation techniques such as liquid chromatography (LC) or gas chromatography (GC). Due to its high resolution and mass accuracy, especially in the most recent state-of-the-art mass analyzers, MS is very powerful in untargeted metabolomics, allowing for both a large coverage of the metabolome as well as identification of unknown compounds [72]. MS is much more sensitive than NMR and allows for the analysis of a large number of metabolites. However, MS is a destructive technique, less reproducible than NMR, and requires adequate sample preparation to avoid potential matrix effects [73]. Historically, GC–MS has been the first technique used in metabolomics, leading to very efficient separations and allowing for straightforward compounds identification thank to the multiple databases commercially available. GC–MS shows some limitations, such as the potential loss of thermolabile compounds, a rather cumbersome sample preparation involving a two-step derivatization of nonvolatile compounds, and a higher variability than the one observed with LC–MS [71,72]. LC–MS has therefore gained importance in metabolomics, allowing for the direct analysis of metabolites presenting a large physicochemical diversity with high throughput, selectivity and sensitivity. In the past two decades, several technological improvements have been carried out in the field of LC–MS, such as the development of alternative chromatographic modes, the comeback of supercritical fluid chromatography and the design of new sizes of porous particles, leading to significant improvements in separation efficiency, resolution, selectivity and speed of analysis. These developments have fostered the use of LC–MS in modern clinical metabolomics, where it is now considered the gold standard approach [121]. Clinical metabolomics will also certainly and significantly benefit from the latest developments in LC, for instance the use of nano-columns equipped with micropillar array instead of the conventional columns packed with particles, which represents a breakthrough in the world of chromatography and allows for unprecedented results in terms of separation efficiency and resolution [122,123]. Micropillar array columns have notably demonstrated to enable separation of lipid isomers, showing their promises in lipidomics [124].

Besides chromatography, MS can also be coupled to capillary electrophoresis (CE), allowing for separation of polar and/or charged metabolites with high efficiency and selectivity, with significantly lower amount of sample

Table 2. Summary of metabolomics studies conducted in animal models of Alzheimer's disease.

Animal model	Age	Matrix	Analytical platform	Potential biomarkers in case group compared with control group		Ref.
				Increased levels	Decreased levels	
APPtg2576	19 months	Frontal cortex	NMR	Taurine	NAA, Glu, GSH	[74]
APPtg2576	30 months	Frontal cortex, rhinal cortex, hippocampus, midbrain and cerebellum	NMR	Glu, creatine, taurine (6 and 11 months)	NAA, Glu, myo-inositol, creatine, phosphocholine, GABA (3 months)	[75]
APP-PS1	66–904 days	Frontal cortex	NMR	Myo-inositol	NAA, Glu	[76]
PS2APP	4–24 months	Frontal cortex	NMR	–	NAA, Glu	[77]
CRND8	2–3 months 12–13 months	Cortex, frontal cortex, cerebellum, hippocampus, pons, olfactory bulb, midbrain and striatum	NMR	–	NAA, Glu, Gln, taurine, GABA, choline, phosphocholine, creatine, phosphocreatine, succinate, lactate, Asp, Gly, Ala, Leu, Ile, Val, water-soluble FFAs	[26]
APP-PS1	3, 5 and 8 months	Hippocampus	NMR	Myo-inositol (3 months)	NAA, Glu (5 and 8 months)	[78]
CRND8	20 weeks	Hippocampus	FT-ICR LC–MS	Hippurate, salicylurate, L-gulonolactone, glucose 1-phosphate, 6-phosphogluconic acid, arachidonic acid	–	[79]
APP-PS1	6 months	Hippocampus, cortex, striatum, cerebellum and olfactory bulbs	GC–MS LC–MS	Adenosine, guanosine, inosine, Ser, lactose, myo-inositol, phosphocholine and phosphoserine	AMP, cAMP, cGMP, Glu, Gly, His, lactic acid, malic acid, creatinine, PPI, citric acid, G6P, 2-hydroxyglutaric acid, DHA, urea and dopamine	[80]
APP-PS1	6 months	Hippocampus, cortex, striatum, cerebellum and olfactory bulbs	DIMS	FFA, G3P, glycerophosphocholine, phosphocholine, choline, glycerophosphoinositol, HEPE, HETE, docosapentaenoic acid, docosatetraenoic acid, pyruvate and N1-acetylspermidine	DHA, PE, PPE, L-carnitine, AMP, cholesterol, cholesterol sulfate, DCA, TCA organic acids, Tyr, dopamine and Asp	[81]
TASTPM	50 weeks	Brain tissue and plasma	GC–MS	L-Val, L-Ser, L-Thr, DHEA and D-fructose	Zymosterol, linoleic acid, arachidonic acid, D-Glu, D-Gal, palmitic acid and D-gluconic acid	[82]
APPtg2576 PS1 APP-PS1	36 weeks 36 weeks 16 weeks	Brain tissue	GC–MS	Adenosine, AMP and adenine	NAA, inorganic phosphates, glycerol, malonic acid, ATP, ADP, myo-inositol, GDP, threose, GTP, glutamic acid and malic acid	[83]
APP-PS1	6 months	Serum	DIMS	Diacylglycerols, triacylglycerols, eicosanoids, inosine, choline and glycerophosphoethanolamine	Cholesteryl esters, FFAs, lysophosphocholines, phosphoethanolamine, urea, Ser, Val, Thr, pyroglutamate, His, Tyr, Trp, glucose, carnitine and creatine	[84]
TAPP	4, 10 and 15 months	Urine	NMR	Allantoin, homogentisate and 3-hydroxykynurenine	–	[85]
APPtg2576 APPLd2 CRND8	3–16 months 4–23 months 2–8 months	Urine	GC–MS	Phenylacetone and 1-octen-3-ol	–	[86]
CRND8	15–17 weeks 25–28 weeks 30–31 weeks	Urine	LC–MS	Methionine and desaminotyrosine	N <sup>1</sup> -acetylspermidine and 5-hydroxyindoleacetic acid	[87]
CRND8	12 weeks 18 weeks	Urine	LC–MS	N-acetylvallalanine, 3-methoxytyrosine, N-actylserotonin, N-methylserotonin, N-methyltryptamine and $\alpha$ -ketoglutaric acid	Anthranilic acid and xanthurenic acid	[88]

Ala: Alanine; AMP: Adenosine monophosphate; Asp: Aspartate; cAMP: Cyclic adenosine monophosphate; cGMP: Cyclic guanosine monophosphate; CSF: Cerebrospinal fluid; DCA: Dichloroacetic acid; DHA: Docosahexanoic acid; DIMS: Direct infusion mass spectrometry; FFA: Free fatty acids; FT-ICR/MS: Fourier-transform-ion cyclotron resonance/mass spectrometry; GABA:  $\gamma$ -Aminobutyric acid; GC–MS: Gas chromatography–mass spectrometry; GDP: Guanosine diphosphate; GTP: Guanosine triphosphate; Gln: Glutamine; Glu: Glutamic acid; Gly: Glycine; GSH: Glutathione; G3P: Glyceraldehyde 3-phosphate; G6P: Glucose-6-phosphate; HEPE: Hydroxy-eicosapentaenoic; HETE: Hydroxyeicosatetraenoic acid; His: Histidine; Ile: Isoleucine; IMP: Inosinic acid; LC–MS: Liquid chromatography–mass spectrometry; Leu: Leucine; NAA: Naphthaleneacetic acid; NMR: Nuclear magnetic resonance; PE: Phosphatidylethanolamines; PPE: Plasmylethanolamines; PPI: Inorganic pyrophosphate; Ser: Serine; TCA: Trichloroacetic acid; Thr: Threonine; Trp: Tryptophan; Tyr: Tyrosine; Val: Valine.

**Table 3. Summary of metabolomics studies carried out using cerebrospinal fluid samples in mild cognitive impairment and/or Alzheimer's disease patients.**

Study population	Metabolomics approach	Analytical platform	Potential biomarkers in case group compared with control group		Ref.
			Increased levels	Decreased levels	
Control (n = 38) MCI (n = 36) AD (n = 40)	Targeted	LC-ECA	Met, 5-HIAA and hypoxanthine (MCI); Met, 5-HIAA, vanillylmandelic acid, xanthosine and glutathione (AD)	–	[89]
Control (n = 15) MCI (n = 15) AD (n = 15)	Non-targeted	LC-TOF-MS	Acetoacetic acid, pyruvic acid, 2-methyl-3-ketovaleric acid, 2-furoic acid, N-acetyl-a-neuraminic acid, dehydroascorbic acid, 5-(hydroxymethyl)-2-furancarboxylic acid, diacetyl, diethanolamine, Ne-methyl-L-lysine, lecanoric acid, ethopropazine and 8-amino caprylic acid (MCI and AD); 2-methylbutyrylglycine and pyrimethamine (MCI); Pro (AD)	Deoxyadenosine, isoniazid, fumaric acid, pyroglutamic acid, testosterone sulfate, lactaldehyde, pirenzepine, methylglyoxal, (S)-2-hydroxyglutarate, L-Aspartic acid b-semialdehyde, cotarnine, 4-hydroxy-L-threonine, acetazolamide, imidazolone, Met, Ala, Glu, Lys and His (MCI and AD); Pro (MCI); 2-methylbutyrylglycine and pyrimethamine (AD)	[90]
Control (n = 33) MCI stable (n = 26) MCI progressors (n = 13) AD (n = 27)	Targeted	CE-LIF	L-Arg, L-Glu, L-Asp and L-Lys	GABA	[91]
Control (n = 19) Stable MCI (n = 22) MCI progressors (n = 9) AD (n = 23)	Non-targeted	CE-MS	Choline and Ser (MCI); Val and dimethylarginine (AD)	His (MCI and AD); Arg, creatine, carnitine and suberylglycine (AD)	[92]
Control (n = 21) Stable MCI (n = 21) MCI progressors (n = 12) AD (n = 21)	Non-targeted	LC-TOF-MS	Xhantine, uracil, nonanoylglycine, hydroxyphosphinyl-piruvate, taurine and sphingosine-1-phosphate (MCI); uridine, methylsalsolinol, dopamine-quinone, caproic acid and 5'-methylthioadenosine (MCI and AD)	Vanylglycol and uracil (AD); serinyl-tyrosine, pipercolic acid, His and Trp (MCI); creatinine (MCI and AD)	[93]
Control (n = 51) AD (n = 79)	Targeted	GC-MS LC-MS	Cortisol, cysteine and NE	Uridine and dopamine	[94]
Control (n = 17) AD (n = 12)	Targeted	NMR	Glu, Ala, Leu, Val, Tyr, Ile, Lys, lactate, pyruvate and inositol	–	[95]
Control (n = 34) Subjects with typical AD marker profile (n = 10)	Non-targeted	NMR	Creatinine	–	[96]

Information in brackets refers to the case group.  
5-HIAA: 5-hydroxyindoleacetic acid; AD: Alzheimer's disease; Ala: Alanine; Arg: Arginine; Asn: Asparagine; Asp: Aspartate; CE-LIF: Capillary electrophoresis-laser-induced fluorescence; CE-MS: Capillary electrophoresis-mass spectrometry; Cys: Cysteine; GABA:  $\gamma$ -Aminobutyric acid; GC-MS: Gas chromatography-mass spectrometry; GC-TOF-MS: Gas chromatography-time-of-flight-mass spectrometry; Glu: Glutamic acid; His: Histidine; Ile: Isoleucine; LC-ECA: Liquid chromatography-electrochemical array; LC-MS: Liquid chromatography-mass spectrometry; LC-TOF-MS: Liquid chromatography-time-of-flight-mass spectrometry; Leu: Leucine; Lys: Lysine; MCI: Mild cognitive impairment; Met: Methionine; NE: Norepinephrine; NMR: Nuclear magnetic resonance; Pro: Proline; Ser: Serine; Trp: Tryptophan; Val: Valine.

and solvents consumed [92,125]. However, CE-MS remains little used in metabolomics due to poor reproducibility and instrumental constraints which limit high-throughput techniques [71,121].

In AD research, LC-MS remains by far the method of choice, even though some direct infusion mass spectrometry (DIMS) approaches have been reported [81,84,126,127]. DIMS relies on the direct infusion of prepared samples in the MS without prior chromatographic separations, allowing for high throughput analyses and large coverage of metabolites, but is more prone to matrix effects and ion suppression [128,129]. DIMS is particularly popular in lipidomics, where an additional separation dimension can be used based on ion mobility mass spectrometry, which enables the separation of lipid isomers and/or lipid classes. Ion mobility combined to DIMS has been for instance already used to study amyloid formation in AD, and will certainly be increasingly considered in AD research to better understand the role of some lipids in the disease pathology [130].

### Potential of metabolomics in AD research & biomarker discovery

Omics technologies aim at investigating the composition of a biological sample to better understand the pathophysiological processes occurring in an organism. While traditional experimental models only offer a temporal picture



**Table 4. Summary of metabolomics studies conducted in blood-derived samples of Alzheimer's disease patients.**

Study population	Metabolomics approach	Analytical platform	Potential biomarkers in case group compared with control group		Ref.
			Increased levels	Decreased levels	
Plasma: – Control (n = 15) – MCI (n = 15) – AD (n = 15)	Nontargeted	LC–TOF/MS	Val, Ser and Arg (MCI and AD); Trp and Phe (MCI); cholesterol and myo-inositol (AD)	Gly, Phe, Met, His, Asp, Cys (MCI and AD); Trp and Phe (AD); cholesterol (MCI)	[90]
Plasma: – Control (n = 8) – AD (n = 8)	Nontargeted	LC–MS	L-DOPA, anserine, ornithine, Ile, Ala, Lys, Cys, alloleucine and Asp	Carnosine, dopamine, Arg and citrulline	[97]
Serum: – Control (n = 99) – AD (n = 93)	Targeted	FIA-MS/MS LC–MS/MS	No difference	No difference	[98]
Plasma: – Control (n = 10) – MCI (n = 12) – AD (n = 16)	Targeted	LC–MS	GCA, GDCA and GCDCA	–	[99]
Plasma: non-demented participants (n = 2067)	Targeted	LC–MS	Anthranilic acid, glutamic acid, taurine and hypoxanthine	–	[100]

AD: Alzheimer's disease; Ala: Alanine; Arg: Arginine; Asn: Asparagine; Asp: Aspartate; Cys: Cysteine; DOPA: Dihydroxyphenylalanine; FIA-MS/MS: Flow injection analysis/tandem mass spectrometry; GABA:  $\gamma$ -Aminobutyric acid; GCA: Glycocholic acid; GCDCA: Glycochenodeoxycholic acid; GDCA: Glycodeoxycholic acid; Glu: Glutamic acid; His: Histidine; Ile: Isoleucine; LC–MS: Liquid chromatography–mass spectrometry; LC–MS/MS: Liquid chromatography–tandem mass spectrometry; LC–TOF/MS: Liquid chromatography–time-of-flight–mass spectrometry; Lys: Lysine; MCI: Mild cognitive impairment; Met: Methionine; Phe: Phenylalanine; Pro: Proline, Ser: Serine, Trp: Tryptophan.

**Table 5. Summary of metabolomics studies conducted in post-mortem samples of Alzheimer's disease patients.**

Study population	Metabolomics approach	Analytical platform	Potential biomarkers in case group compared with control group		Ref.
			Increased levels	Decreased levels	
Entorhinal cortex: – Control (n = 4) – AD (n = 16)	Nontargeted	LC–MS	Guanine	Deoxyguanosine, IDP, xanthosine, Gly, dGMP	[101]
Hippocampus, cerebellum and superior frontal gyrus: – Control (n = 23) – AD (n = 12)	Targeted	LC–MS HPLC	L-Arg	L-ornithine, agmatine, spermidine, putrescine, spermine, Glu	[102]
Frontal cortex: – Control (n = 19) – AD (n = 21)	Nontargeted	LC–MS	NAA, lactate, serine, pyruvate, Glu and malate	Asp and citrate	[70]
Frontal, parietal and occipital lobes: – Control (n = 10) – AD (n = 10)	Nontargeted	LC–TOF/MS	Spermine, spermidine and putrescine	–	[103]
Frontal cortex: – AD (n = 8) – ALS (n = 11)	Nontargeted	NMR	Acetate, Ala, Glu and glutamine	Creatine and lactate	[104]
Brain homogenates: – Control – AD	Nontargeted	LC–MS/MS	L-Phe	L-lactic acid	[105]

AD: Alzheimer's disease; Ala: Alanine; ALS: Amyotrophic lateral sclerosis; Arg: Arginine; Asp: Aspartate; Gly: Glycine; Glu: Glutamic acid; dGMP: Deoxyguanosine monophosphate; HPLC: High-pressure liquid chromatography; IDP: Inosine diphosphate; LC–MS: Liquid chromatography–mass spectrometry; LC–MS/MS: Liquid chromatography–tandem mass spectrometry; LC–TOF/MS: Liquid chromatography–time-of-flight/mass spectrometry; MCI: Mild cognitive impairment; NAA: Naphthaleneacetic acid; NMR: Nuclear magnetic resonance; Phe: Phenylalanine.

of the complex and dynamic biological networks of human diseases, these technologies can show relationships between different pathways and molecules in a biological system. Hence, omics approaches have attracted a lot of attention in AD for the discovery of novel biomarkers candidates that may lead to improved and earlier diagnosis, as well as better therapies and discovery of new therapeutic targets [131]. This growing attention is underlined in the large number of studies using metabolomics and other omics approaches that have been published in the last couple of years.

Metabolomics plays a crucial role in biomarker discovery and drug development since metabolites reflect the final effect of genes- and protein-based (patho)physiological processes. Moreover, metabolites are closely associated

Table 6. Summary of lipidomics studies conducted in Alzheimer's disease patients.

Study population and matrix	Lipidomics approach	Analytical platform	Potential biomarkers in case group compared with control group		Ref.
			Increased levels	Decreased levels	
Plasma: – Control (n = 10) – MCI (n = 10) – AD (n = 10)	Nontargeted	LC-MS	–	LPE 1:18	[106]
Plasma: – Control (n = 42) – MCI (n = 26) – AD (n = 41)	Nontargeted	LC-MS	–	Desmosterol	[68]
Brain tissue: – Control (n = 10) – AD (n = 9)	Targeted	LC-MS NMR	–	Desmosterol	[107]
Plasma: – Control (n = 20) – AD (n = 20)	Nontargeted	LC-MS	–	Trp, phytosphingosine, dihydrosphingosine, hexadecasphinganine and lysoPC	[108]
Cortex, cerebellum and hippocampus: – Control (n = 17) – AD (n = 37)	Nontargeted	DIMS	Nervonic acid, oleic acid, stearic acid, palmitic acid, ximenic acid, palmitoleic acid and mead acid	DHA and cholesteryl esters	[109]
Serum: – Control (n = 45) – MCI (n = 17) – AD (n = 75)	Nontargeted	LC-MS	Acylcarnitine, phenylacetylglutamine, phosphocholines, phosphoethanolamines and sphingomyelins	Phospholipids, sphingolipids, oleamide, monoglycerides, arachidonic acid, DHA, linoleic acid, plasmalogens and histidine	[66]
Serum: – Control (n = 46) – Stable MCI (n = 91) – MCI progressors (n = 52) – AD (n = 47)	Nontargeted	GC-TOF/MS LC-MS	2,4-dihydroxybutanoic acid, pentose phosphate and histamine	Phospholipids, phosphatidylcholines, sterols, sphingomyelins and plasmalogens	[34]
Plasma: – Control (n = 152) – AD (n = 148)	Nontargeted	NMR	PC 40:4, PC 36:3 and VLCTs	Desmosterol	[110]
Plasma: – Control (n = 35) – MCI (n = 33) – AD (n = 43)	Targeted	LC-MS/MS FIA-MS/MS	LysoPC a C18:1 and lysoPC a C18:2	PC aa C34:4, C36:6, C38:3, C40:5 and C40:6	[27]
Plasma: – Control (n = 49) – MCI (n = 50) – AD (n = 42)	Nontargeted	LC-MS NMR	–	PC 16:0/20:5, 16:0/22:6 and 18:0/22:6	[111]
Plasma: – Control (n = 51) – MCI (n = 77) – LOAD (n = 90)	Targeted	MS	DAG 34:2 and DAG36:2	PlsE 38:6 (16:0/22:6) and PlsE 40:6 (18:0/22:6)	[112]
Brain tissue: – Control (n = 46) – AD (n = 193)	Targeted	<sup>31</sup> P NMR	SPH, plasmalogen	PtdEtn, PtdIns, DPG and PtdA	[113]
Brain tissue: – Control (n = 7) – AD (n = 7)	Targeted	DIMS	Ceramide 24:0, galactosylceramide, free cholesterol and HNE	SPH	[114]
Hippocampus and cerebellum: – Control (n = 6) – AD (n = 6)	Targeted	LC-MS/MS	HFA-Cer(d18:1/24:0)	GalCer	[115]
Plasma: – Control (n = 26) – AD (n = 26)	Nontargeted	MDMS-SL	Ceramide N16:0 and N21:0	SPH 22:0 and 24:0	[116]
Serum: – Control (n = 17) – AD (n = 19)	Targeted	DIMS LC-MS	–	PCs, LPPCs, PtdEtn, LPEs and plasmalogens	[117]

AD: Alzheimer's disease; DAG: Diacylglycerol; DHA: Docosahexaenoic acid; DIMS: Direct-infusion mass spectrometry; DPG: Diphosphatidyl glycerol; EDI-MS: Electrospray droplet impact-mass spectrometry; FA: Fatty acid; FIA-MS/MS: Flow-injection analysis/tandem mass spectrometry; GalCer: Galactosylceramide; GC-TOF/MS: Gas chromatography–time-of-flight/mass spectrometry; HFA-Cer: Hydroxy fatty acids-ceramide; HNE: Hydroxynonenal; HPTLC: High-performance thin-layer chromatography; LC-MS: Liquid chromatography–mass spectrometry; LC-MS/MS: Liquid chromatography–tandem mass spectrometry; LPE: Lysophosphatidylethanolamine; LPPC: Lysopalmitoylphosphatidylcholine; LysoPC: Lysophosphatidylcholines; MCI: Mild cognitive impairment; MDMS-SL: Multi-dimensional mass spectrometry-based shotgun lipidomics; MS: Mass spectrometry; NMR: Nuclear magnetic resonance; PCs: Phosphatidylcholines; PlsE: Ethanolamine plasmalogen; PtdEtn: Phosphatidylethanolamine; PtdA: Phosphatidic acid phosphatase; PtdIns: Phosphatidylinositol; PUFA: Polyunsaturated fatty acids; SPH: Sphingomyelin; Trp: Tryptophan; VLCT: Very long chain triglycerides.

Table 6. Summary of lipidomics studies conducted in Alzheimer's disease patients (cont.).

Study population and matrix	Lipidomics approach	Analytical platform	Potential biomarkers in case group compared with control group		Ref.
			Increased levels	Decreased levels	
Plasma and brain tissue: – Control (n = 12) – MCI (n = 12) – AD (n = 12)	Targeted	LC–UV	α-linolenate	Linoleic acid, oleic acid, ω-6 FAs, ω-3 FAs, DHA, palmitate, eicosapentaenoic acid (plasma); DHA (brain)	[118]
Frontal brain cortex: – Control (n = 20) – AD (n = 10)	Targeted	HPTLC	–	22:6n-3 PUFA, DHA, 18:1n-9 FA and oleic acid	[119]
Serum: – Control (n = 26) – MCI (n = 19)	Targeted	NMR	Cholesterol	ω-3 FAs, sphingomyelin and PC	[120]

AD: Alzheimer's disease; DAG: Diacylglycerol; DHA: Docosahexaenoic acid; DIMS: Direct-infusion mass spectrometry; DPG: Diphosphatidyl glycerol; EDI-MS: Electrospray droplet impact-mass spectrometry; FA: Fatty acid; FIA-MS/MS: Flow-injection analysis/tandem mass spectrometry; GalCer: Galactosylceramide; GC–TOF/MS: Gas chromatography–time-of-flight/mass spectrometry; HFA-Cer: Hydroxy fatty acids-ceramide; HNE: Hydroxynonenal; HPTLC: High-performance thin-layer chromatography; LC–MS: Liquid chromatography–mass spectrometry; LC–MS/MS: Liquid chromatography–tandem mass spectrometry; LPE: Lysophosphatidylethanolamine; LPPC: Lysopalmitoylphosphatidylcholine; LysoPC: Lysophosphatidylcholines; MCI: Mild cognitive impairment; MDMS–SL: Multi-dimensional mass spectrometry-based shotgun lipidomics; MS: Mass spectrometry; NMR: Nuclear magnetic resonance; PCs: Phosphatidylcholines; PlSE: Ethanolamine plasmalogen; PtdEtn: Phosphatidylethanolamine; PtdA: Phosphatidic acid phosphatase; PtdIns: Phosphatidylinositol; PUFA: Polyunsaturated fatty acids; SPH: Sphingomyelin; Trp: Tryptophan; VLCT: Very long chain triglycerides.

with changes in the phenotype [68]. Metabolomics offers several advantages in biomarkers discovery, including information on molecular mechanisms by monitoring dynamic changes inside biological systems; suitability for clinical application as well as translational medicine; and identification of novel molecular biomarkers and affected pathways, allowing for a better understanding of the pathological mechanisms [73].

The use of metabolomics has significantly increased in the recent years in AD research. Large-scale prospective studies, such as the Alzheimer's Disease Neuroimaging Initiative (ADNI), the Framingham study and the Rotterdam study, have strongly contributed to this phenomenon, showing their importance in supporting the identification of possible molecular changes related to AD pathology. These large-scale studies provide adequate experimental designs for metabolomics due to the number of subjects included in the cohorts. Moreover, since these studies also focus on a population before development of symptoms, they provide key biological insights that could lead to a targeted preclinical prevention. For instance, using the Framingham cohort, the investigation of 217 plasma metabolites levels in 2067 dementia-free participants using LC–MS demonstrated higher plasma levels of three amines (taurine, glutamic acid and anthranilic acid) and one purine (hypoxanthine), all associated with greater risks of developing dementia [6]. The Rotterdam study cohort was used to highlight 26 metabolites which showed different plasma levels in AD patients compared with control subjects [6]. Using network visualization, five main hub compounds (i.e., metabolites of high regulatory importance, located in the center of the network) were identified, including glycylglycine, lysophosphatic acid C18:2, tyrosine, glutamine and platelet-activating factor C16:0. Adding genetic information to these networks (i.e., *APOE* ε4 positive versus negative status) suggested alternative biochemical dysregulations depending on the genotype, also highlighting the usefulness of omics data integration. Finally, targeted and nontargeted metabolomics were used to analyze samples from the Alzheimer Disease Metabolomics Consortium (ADMC) in partnership with ADNI, mapping metabolic pathways to create a comprehensive biochemical database for AD. The latest results of ADNI1 cohort showed alterations in different metabolites depending on the AD stage. Alterations in the levels of ether-containing phosphatidylcholines and sphingomyelins were found in preclinical biomarker-defined AD stages, whereas levels of several amines and acylcarnitines changed in symptomatic stages [7,132].

It is worth mentioning that the availability and diversity of such cohorts is also very beneficial for replication studies. Indeed, it is now widely accepted that potential biomarkers candidates highlighted in the discovery phase in a specific cohort should be independently replicated in another cohort. Replication studies are crucial to ensure the validity of the results obtained during the discovery phase, which is essential in omics field due to multiple testing challenges [133].

Besides a better understanding of pathophysiological mechanisms of a disease, the potential of metabolomics also relies in identifying possible biomarker candidates which can predict drug response and evaluate the (off-target) effects of a drug on the metabolome. This was for instance highlighted using a transgenic mouse model of AD (APP<sup>swe</sup>/PS1<sup>ΔE9</sup>) and a novel drug candidate called CAD-31 [134]. Metabolomics analysis revealed that the major effect of CAD-31 is related to inflammation and lipid metabolism, with a shift in the metabolic profile of fatty

acids toward the production of ketone bodies, which are known to be neuroprotective and are used as a potent energy source for the brain when the glucose levels are low, such as in AD. Moreover, CAD-31 increased the levels of sphingolipids, which are also dysregulated in AD [134]. Administration of bile acids may also be an interesting therapeutic approach in AD. Indeed, some bile acids have anti-inflammatory and protective effects on the brain and show altered plasma levels in AD patients [135]. Novel therapeutic approaches based on bile acids are therefore very promising, as demonstrated by the effect produced by administration of tauroursodeoxycholic acid in APP/PS1 mice models after disease onset, which led to attenuation of A $\beta$  deposition in the brain, and concomitant decrease of A $\beta$ <sub>40</sub> and A $\beta$ <sub>42</sub> levels [136].

Overall, these selected clinical examples show the relevance of metabolomics in AD research for a better understanding of the molecular mechanisms underlying the disease pathology, or for prediction of a drug response/off target effects.

### Metabolomics in AD: from animal to human studies

This section presents and discusses the studies that have been carried out in animal models and humans using metabolomics and in different types of biosamples, including blood-derived material, CSF and post-mortem samples.

#### Animal studies

Several transgenic models are available to study AD which carry the mutations in *APP*, *PSEN1* or *PSEN2*, and Tau genes. Animal models allow for the investigation of not only peripheral fluids such as blood or urine, but also brain tissues. Moreover, longitudinal studies can also be carried out with animal models to track the disease progression, which remains much more challenging in humans. Metabolic pathways are evolutionarily relatively well conserved between mice and humans. Thus, the metabolic changes identified in animal research closely mimic changes in human patients, making the translation into human studies easier.

Table 2 lists the studies that have reported metabolic changes in animal models of AD. This table illustrates the large diversity of studies performed with AD animal models, using either NMR or MS-based techniques. Most of the studies have focused on brain tissues, typically hippocampus and frontal cortex, while few studies have been reported in urine or plasma samples. Multiple metabolites have shown to be altered versus control samples or along with the time, typically amino acids, some organic acids, fatty acids, lipids and neurotransmitters. Figure 1 summarizes the results obtained in animal models of AD using metabolomics-based approaches in brain tissue, plasma and urine, showing the altered pathways as well as possible pathophysiological consequences.

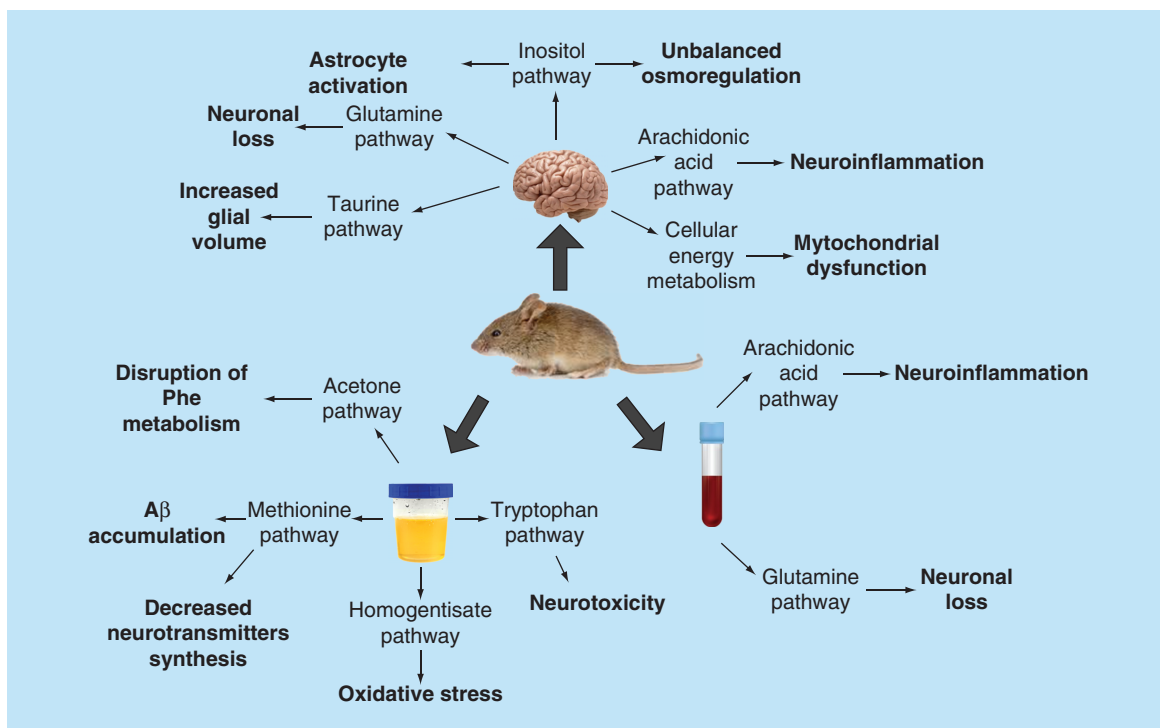
#### Human studies

Pre-mortem brain tissues being not available compared with mice models, most of the human studies focus on the analysis of blood-derived samples, CSF and post-mortem brain samples.

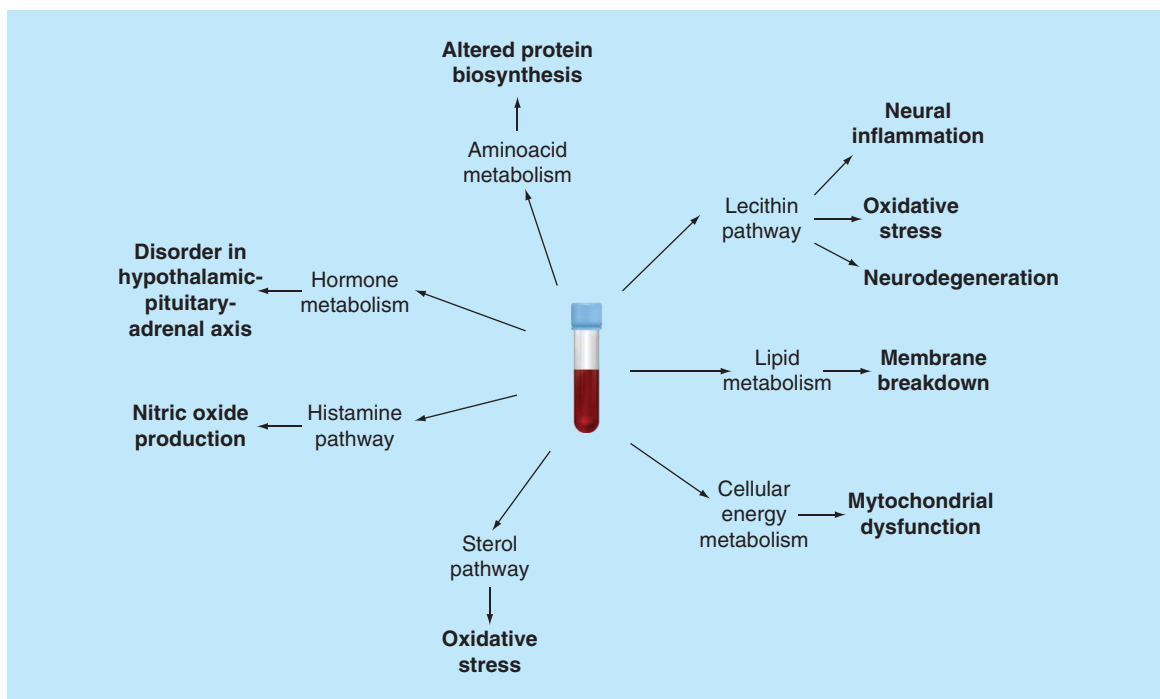
Table 3 lists all the studies performed in human using CSF samples using untargeted and targeted approaches. Despite requiring more invasive methods for sample collection compared with plasma, CSF represents an attractive study matrix in AD research due to the close connection with brain events. Changes in CSF levels of tau protein and A $\beta$ <sub>42</sub> peptide are well-known, leading to the hypothesis that the CSF metabolome might also be altered upon MCI, dementia or AD. More than 400 metabolites have been already reported in healthy CSF [92], a number expected to grow with the large amount of metabolomics studies currently focused on CSF analysis. In the field of AD research, the number of metabolomics-based studies investigating CSF composition is also expected to grow, remaining currently relatively low as shown in Table 3. Supplementary Figure 1 illustrates the main results that have been found using LC–MS, GC–MS or CE–MS for the analysis of CSF samples.

Despite the presence of the BBB, peripheral effects of AD might also be captured beyond the CSF, in other words, in blood-derived samples. Potential biomarkers candidates in such matrix show the main advantages to be easily accessible. However, changes in the plasma metabolome are then difficult to interpret and to link with AD pathophysiology. Table 4 lists all the studies performed in human blood samples using metabolomics approaches, both targeted and untargeted. Numerous efforts have been made in the last years to discover potential biomarkers of AD in peripheral samples different from CSF, such as blood samples, as highlighted in Table 4. Figure 2 illustrates the main results that have been found using LC–MS, GC–MS or CE–MS for the analysis of blood-derived samples.

Finally, brain tissue represents the closest matrix to study the pathophysiology of AD. Post-mortem samples have indeed brought about the main theories underlying the origin of AD. The metabolite composition varies



**Figure 1.** Main pathways altered in mouse models of Alzheimer's disease. Principal pathways altered in blood, urine and brain tissue of Alzheimer's disease mouse models and the biologic consequences of these alterations.



**Figure 2.** Main metabolic classes altered in the blood of Alzheimer's disease patients. Several metabolic classes are altered in blood-derived samples of Alzheimer's disease patients, highlighting different biological consequences (in bold).

extensively depending on the brain areas, highlighting the careful selection of the section of interest. The majority of metabolomics-based studies have therefore been performed on several brain sections within the same study. Table 5 list the studies and findings associated to post-mortem brain analysis. Supplementary Figure 2 illustrates the main results that have been found using LC–MS, GC–MS or CE–MS for the analysis of post-mortem tissue samples.

It is worth mentioning that besides metabolites, the latest research has been also focusing on even smaller compounds, in other words, metal ions (referred to as ‘ionomics’). Indeed, metal ions are important as they act as essential cofactors for many proteins and play an important role in preserving neuronal function. An increasing body of literature suggests a critical role for metal ions in AD. On one hand, certain metal ions, such as zinc, copper and iron, have been found to be enriched in brain A $\beta$  plaques, leading to a reduction in their bioavailability and thereby causing an imbalance in metal homeostasis. Metal ions can be neurotoxic and induce epigenetic changes, therefore aggravating the progression of AD. Moreover, alterations in metal ions concentrations in the brain can lead to increase of A $\beta$  and tau aggregation along with an increase in APP processing [137]. Finally, iron dyshomeostasis is an early event in AD pathology. Impaired iron homeostasis causes formation of toxic oxidative species and increased production of A $\beta$  proteins [138]. Supplementary Table 1 gives an overview of relevant studies that have focused on metal ions in the context of AD [139–142].

### Next-generation biomarker discovery: the role of lipidomics

Lipidomics, in other words, the large-scale study of lipid species and networks in biological systems, has been capturing much more attention in the past few years. Lipids are not only the major constituents of cell membranes and critical to maintain the characteristics of membranes, such as mobility or fluidity, but they also play an essential role in cell signaling and multiple other physiological processes, including inflammation. Investigations on the structure and function of diverse lipid species may not only provide insights on the roles of lipids in numerous human diseases, but identify potential biomarkers for diagnosis and reveal the mechanisms underlying cellular lipid homeostasis [34]. Lipidomics has recently become a field of interest in the discovery of biomarkers for AD and numerous AD metabolic profiling studies of blood samples have been carried out using lipidomics-based approaches, focusing on different lipid classes and lipid mediators.

Table 6 lists the studies that have focused on lipid analysis in the context of AD research, using blood-derived or brain tissues samples. Multiple lipid classes have been investigated, either in a targeted or untargeted fashion, including free fatty acids, sphingolipids, glycerophospholipids, glycerolipids and sterol lipids. Desmosterol, a precursor of cholesterol, has gained a lot of attention in AD research due to the role of cholesterol and neurosteroids in brain pathology. It has been for instance reported that the local synthesis of cholesterol was decreased in specific brain areas due to decreased expression of the gene *DHCR24* which governs the conversion of desmosterol to cholesterol. The enzyme 24-dehydrocholesterol reductase (DHCR24) has also shown to counteract the  $\beta$ -secretase cleavage of APP and formation of A $\beta$  [107]. Polyunsaturated fatty acids (PUFAs), such as docoheptaenoic acid (DHA), linoleic acid and eicosapentaenoic acids (EPA) are also attracting attention due to their possible role in AD pathology. Together with arachidonic acid, DHA (C22:6), an omega-3 fatty acid, is the major PUFA component of brain lipids and is essential for normal brain development in early life, formation of neuronal synapses and membrane fluidity. DHA levels in blood have shown to be associated with higher general cognitive ability in a large-scale cross-sectional study (more than 20'000 individuals) [8]. High intakes of DHA and fish (oil) in AD prevention have also been investigated, since DHA plasma levels are increased by eating fat fish. Further research is needed since the literature reporting the effects of DHA supplementation in AD leads to different and sometimes inconsistent results [143]. Supplementary Figure 3 illustrates the main altered lipid classes that have been reported using lipidomics approaches, using post-mortem tissue and plasma samples.

### Conclusion

Despite the multiple efforts carried out in the last decade in AD research, the pathophysiological mechanisms underlying the disease remain poorly understood. In this context, metabolomics-based approaches, in combination with other omics, are believed to expand this knowledge and allow for an earlier diagnosis of sAD as well as a better understanding of the biomolecular mechanisms, ultimately leading to the discovery of new therapeutic targets.

Due to its closeness to the brain, CSF remains the most studied body fluid in AD research. However, even though CSF is essential for a better understanding of the biomolecular mechanisms involved in the disease, its collection is invasive and prone to high risks. There is now a clear trend toward the investigation of other bio-fluids which

can be easily collected, such as blood or urine, where the disease progression could be tentatively captured at the metabolite level, allowing for large-scale screenings and monitoring of disease progression, and this at lower costs. Currently, only CSF and post-mortem brain tissues are used, since no blood-based biomarker has been shown to have sufficient predictive value to be used in clinical practice.

### Future perspective

Metabolomics-based studies using large-scale prospective cohorts will probably help to gain a better understanding of the disease. Indeed, multiple findings reported over the last decades in a rather small population could not be replicated in larger cohorts. Indeed, metabolite levels are prone to relatively high intra- and interindividual variabilities, showing the importance of large-scale studies for the discovery of possible biomarker candidates. Such large cohorts also allow for replication of preliminary findings obtained in the discovery phase. Moreover, most of these cohorts also include collection of other omics information (genomics, proteomics, epigenomics) and/or brain imaging measurements. Integrating all omics approaches will certainly lead to the discovery of novel biomolecular pathways in AD pathophysiology. One essential requirement of such cohorts is the standardization of clinical and operating procedures. Indeed, different cohorts might not use the same criteria for the diagnosis of MCI or AD, and/or have different sample collection and pre-analytical procedures, which will hamper the comparison and replication of findings between cohorts.

A large diversity of metabolites has been reported to potentially play a role in AD pathology, belonging to multiple biochemical pathways. This strongly supports the new paradigm observed in metabolomics-based research, where the initial idea of finding one single specific metabolite is being replaced by the quest for larger metabolic biomarker profiles, encompassing dynamic interactions between metabolic pathways. Among the metabolites believed to play a crucial role in AD pathophysiology, (signaling) lipids appear very promising. Lipids and signaling lipids have already shown to be involved in multiple (patho)physiological processes. Therefore, there is no doubt that lipidomics will be an essential part of future AD research to better understand the causes of the disease.

#### Executive summary

- Current clinical approaches for the diagnosis of Alzheimer's disease (AD) rely on proteomics and genomics-derived biomarkers, including cerebrospinal fluid Tau and A $\beta$ <sub>42</sub> levels, as well as *APOE*, *PSEN1*, *PSEN2* and *APP*. Post-mortem analysis is used for definitive diagnosis of the disease.
- In recent years, metabolomics has become a promising tool to better understand the underlying mechanisms of AD and provide new strategies for the discovery of new biomarker candidates.
- Several metabolomics-based studies have reported alterations in metabolite levels in different populations, for example, mild cognitive impairment and AD patients, showing the diversity of metabolites that might play a role in AD pathophysiology.
- Lipids are involved in several physiological processes; some (signaling) lipids may be putative and promising biomarker candidates for AD.

#### Financial & competing interests disclosure

The authors have no relevant affiliations or financial involvement with any organization or entity with a financial interest in or financial conflict with the subject matter or materials discussed in the manuscript. This includes employment, consultancies, honoraria, stock ownership or options, expert testimony, grants or patents received or pending, or royalties.

No writing assistance was utilized in the production of this manuscript.

#### References

Papers of special note have been highlighted as: • of interest; •• of considerable interest

1. Waggle KS, Kahle PJ, Tolwani RJ. Neurons and mechanisms of neuronal death in neurodegenerative diseases: a brief review. *Comp. Med.* 49(4), 358–362 (1999).
2. De Pedro-Cuesta J, Rábano A, Martínez-Martín P *et al.* Comparative incidence of conformational, neurodegenerative disorders. *PLoS ONE* 10(9), e0137342 (2015).
3. Ibáñez C, Valdés A, García-Cañas V, Simó C. Metabolomics in the study of Alzheimer's disease. *Compr. Anal. Chem.* 64(10), 249–278 (2014).
4. Li X-L, Hu N, Tan M-S, Yu J-T, Tan L. Behavioral and psychological symptoms in Alzheimer's Disease. *Biomed Res. Int.* 1–9 (2014).

5. Irizarry MC. Biomarkers of Alzheimer's disease in plasma. *J. Am. Soc. Exp. Neurother.* 1(2), 226–234 (2004).
6. de Leeuw FA, Peeters CFW, Kester MI *et al.* Blood-based metabolic signatures in Alzheimer's disease. *Alzheimers Dement. (Amst.)* 8, 196–207 (2017).
7. Toledo JB, Arnold M, Kastenmüller G *et al.* Metabolic network failures in Alzheimer's disease: a biochemical road map. *Alzheimers Dement.* 13(9), 965–984 (2017).
- **A very interesting research article from the Alzheimer's Disease Metabolomics Consortium where metabolomics was used in a large prospective cohort, the Alzheimer's Disease Neuroimaging Initiative (ADNI) and the results replicated in other large-scale populations.**
8. van der Lee SJ, Teunissen CE, Pool R *et al.* Circulating metabolites and general cognitive ability and dementia: evidence from 11 cohort studies. *Alzheimers Dement.* (2018).
9. Cheignon C, Tomas M, Bonnefont-Rousselot D, Faller P, Hureau C, Collin F. Oxidative stress and the amyloid beta peptide in Alzheimer's disease. *Redox Biol.* 14, 450–464 (2018).
10. Nestor PJ, Scheltens P, Hodges JR. Advances in the early detection of Alzheimer's disease. *Nat. Rev. Neurosci.* 10(7), S34–41 (2004).
11. Lista S, O'Bryant SE, Blennow K *et al.* Biomarkers in sporadic and familial Alzheimer's disease. *J. Alzheimers Dis.* 47(2), 291–317 (2015).
12. Grehan S, Tse E, Taylor JM. Two distal downstream enhancers direct expression of the human apolipoprotein E gene to astrocytes in the brain. *J. Neurosci.* 21(3), 812–822 (2001).
13. Barba I, Fernandez-Montesinos R, Garcia-Dorado D, Pozo D. Alzheimer's disease beyond the genomic era: Nuclear magnetic resonance (NMR) spectroscopy-based metabolomics. *J. Cell. Mol. Med.* 12(5A), 1477–1485 (2008).
14. Holtzman DM. Role of apoE/A $\beta$  interactions in the pathogenesis of Alzheimer's disease and cerebral amyloid angiopathy. *J. Mol. Neurosci.* 17(2), 147–155 (2001).
15. Corder EH, Saunders AM, Strittmatter WJ *et al.* Gene dose of apolipoprotein E type 4 allele and the risk of Alzheimer's disease in late onset families. *Science* 261(5123), 921–923 (1993).
16. Gupta VB, Laws SM, Villemagne VL *et al.* Plasma apolipoprotein E and Alzheimer disease risk: the AIBL study of aging. *Neurology* 76(12), 1091–1098 (2011).
17. Shi Y, Yamada K, Liddel SA *et al.* ApoE4 markedly exacerbates tau-mediated neurodegeneration in a mouse model of tauopathy. *Nature* 549(7673), 523–527 (2017).
18. Liu CC, Kanekiyo T, Xu H, Bu G. Apolipoprotein E and Alzheimer disease: risk, mechanisms and therapy. *Nat. Rev. Neurol.* 9(2), 106–118 (2013).
19. Véléz JI, Lopera F, Sepulveda-Falla D *et al.* APOE\*E2 allele delays age of onset in PSEN1 E280A Alzheimer's disease. *Mol. Psychiatry* 21(7), 916–924 (2016).
20. Kim MW, Abid N bin, Jo MH, Jo MG, Yoon GH, Kim MO. Suppression of adiponectin receptor 1 promotes memory dysfunction and Alzheimer's disease-like pathologies. *Sci. Rep.* 7(1), 12435 (2017).
21. Bateman RJ, Aisen PS, De Strooper B *et al.* Autosomal-dominant Alzheimer's disease: a review and proposal for the prevention of Alzheimer's disease. *Alzheimers Res. Ther.* 3(1), 1 (2011).
22. Kaddurah-Daouk R, Rozen S, Matson W *et al.* Metabolomic changes in autopsy-confirmed Alzheimer's disease. *Alzheimers Dement.* 7(3), 309–317 (2011).
23. Hardy J, Higgins G. Alzheimer's disease: the amyloid cascade hypothesis. *Science* 256(5054), 184–185 (1992).
24. Braak H, Braak E. Neuropathological staging of Alzheimer-related changes. *Acta Neuropathol.* 82(4), 239–259 (1991).
25. Hardy J, Selkoe DJ. The amyloid hypothesis of Alzheimer's disease: progress and problems on the road to therapeutics. *Science* 297(5580), 353–356 (2002).
26. Salek RM, Xia J, Innes A *et al.* A metabolomic study of the CRND8 transgenic mouse model of Alzheimer's disease. *Neurochem. Int.* 56(8), 937–947 (2010).
27. Klavins K, Koal T, Dallmann G, Marksteiner J, Kemmler G, Humpel C. The ratio of phosphatidylcholines to lysophosphatidylcholines in plasma differentiates healthy controls from patients with Alzheimer's disease and mild cognitive impairment. *Alzheimers Dement.* 1(3), 295–302 (2015).
28. Du X, Wang X, Geng M. Alzheimer's disease hypothesis and related therapies. *Transl. Neurodegener.* 7(1), 2 (2018).
29. Johnson GV, Hartigan JA. Tau protein in normal and Alzheimer's disease brain. *J. Alzheimers Dis.* 1(4–5), 329–351 (1999).
30. Bloom GS. Amyloid- $\beta$  and tau: the trigger and bullet in Alzheimer disease pathogenesis. *JAMA Neurol.* 71(4), 505–508 (2014).
31. Sperling RA, Aisen PS, Beckett LA *et al.* Toward defining the preclinical stages of Alzheimer's disease: recommendations from the National Institute on Aging-Alzheimer's Association workgroups on diagnostic guidelines for Alzheimer's disease. *Alzheimers Dement.* 7(3), 280–292 (2011).
32. Petersen RC, Smith GE, Waring SC, Ivnik RJ, Tangalos EG, Kokmen E. Mild cognitive impairment: clinical characterization and outcome. *Arch. Neurol.* 56(3), 303–308 (1999).



33. Ward A, Tardiff S, Dye C, Arrighi HM. Rate of conversion from prodromal Alzheimer's disease to Alzheimer's dementia: a systematic review of the literature. *Dement. Geriatr. Cogn. Dis. Extra.* 3(1), 320–332 (2013).
34. Orešič M, Hyötyläinen T, Herukka S-K *et al.* Metabolome in progression to Alzheimer's disease. *Transl. Psychiatry* 1, e57 (2011).
  - **A metabolomics-based study evaluating the difference of the plasma metabolome in patients with mild cognitive impairment and AD. The results show the possible implication of hypoxia, oxidative stress and membrane lipid remodeling in progression to AD stage.**
35. Morris JC, Storandt M, Miller JP *et al.* Mild cognitive impairment represents early-stage Alzheimer disease. *Arch. Neurol.* 58(3), 397–405 (2001).
36. Saito S, Kojima S, Oishi N *et al.* A multicenter, randomized, placebo-controlled trial for cilostazol in patients with mild cognitive impairment: the COMCID study protocol. *Alzheimers Dement. Transl. Res. Clin. Interv.* 2(4), 250–257 (2016).
37. Mecocci P, Polidori MC. Antioxidant clinical trials in mild cognitive impairment and Alzheimer's disease. *Biochim. Biophys. Acta Mol. Basis Dis.* 1822(5), 631–638 (2012).
38. Humpel C. Identifying and validating biomarkers for Alzheimer's disease. *Trends Biotechnol.* 29(1), 26–32 (2011).
  - **An exhaustive and very interesting review about the biomarker research in AD.**
39. Kang J, Lu J, Zhang X. Metabolomics-based promising candidate biomarkers and pathways in Alzheimer's disease. *Pharmazie* 70(5), 277–282 (2015).
40. Roche S, Gabelle A, Lehmann S. Clinical proteomics of the cerebrospinal fluid: towards the discovery of new biomarkers. *Proteomics Clin. Appl.* 2(3), 428–436 (2008).
41. Sjögren M, Vanderstichele H, Agren H *et al.* Tau and Aβ42 in cerebrospinal fluid from healthy adults 21–93 years of age: establishment of reference values. *Clin. Chem.* 47(10), 1776–1781 (2001).
42. Blennow K. CSF biomarkers for mild cognitive impairment. *J. Intern. Med.* 224–234 (2004).
43. Hampel H, Blennow K, Shaw LM, Hoessler YC, Zetterberg H, Trojanowski JQ. Total and phosphorylated tau protein as biological markers of Alzheimer's disease. *Exp. Gerontol.* 45(1), 30–40 (2010).
44. Mulder C, Verwey NA, van der Flier WM *et al.* Amyloid-β(1–42), total tau, and phosphorylated tau as cerebrospinal fluid biomarkers for the diagnosis of Alzheimer disease. *Clin. Chem.* 56(2), 248–253 (2010).
45. Marksteiner J, Hinterhuber H, Humpel C. Cerebrospinal fluid biomarkers for diagnosis of Alzheimer's disease: beta-amyloid(1–42), tau, phospho-tau-181 and total protein. *Drugs Today* 43(6), 423–431 (2007).
46. Mufson EJ, Counts SE, Perez SE, Ginsberg SD. Cholinergic system during the progression of Alzheimer's disease: therapeutic implications. *Expert Rev. Neurother.* 8(11), 1703–1718 (2009).
47. Hock C, Heese K, Müller-Spahn F *et al.* Increased CSF levels of nerve growth factor in patients with Alzheimer's disease. *Neurology* 54(10), 2009–2011 (2000).
48. Tamaoka A, Fukushima T, Sawamura N *et al.* Amyloid β protein in plasma from patients with sporadic Alzheimer's disease. *J. Neurol. Sci.* 141(1–2), 65–68 (1996).
49. Scheuner D, Eckman C, Jensen M *et al.* Secreted amyloid β-protein similar to that in the senile plaques of Alzheimer's disease is increased *in vivo* by the presenilin 1 and 2 and APP mutations linked to familial Alzheimer's disease. *Nat. Med.* 2(8), 864–870 (1996).
50. Hye A, Kerr F, Archer N *et al.* Glycogen synthase kinase-3 is increased in white cells early in Alzheimer's disease. *Neurosci. Lett.* 373(1), 1–4 (2005).
51. Marksteiner J, Humpel C. Glycogen-synthase kinase-3β is decreased in peripheral blood mononuclear cells of patients with mild cognitive impairment. *Exp. Gerontol.* 44(6–7), 370–371 (2009).
52. Rasmussen KL, Tybjærg-Hansen A, Nordestgaard BG, Frikke-Schmidt R. Plasma levels of apolipoprotein E and risk of dementia in the general population. *Ann. Neurol.* 77(2), 301–311 (2015).
53. Wang C, Yu J-T, Wang H-F *et al.* Meta-analysis of peripheral blood apolipoprotein E levels in Alzheimer's disease. *PLoS ONE* 9(2), e89041 (2014).
54. Taddei K, Clarnette R, Gandy SE, Martins RN. Increased plasma apolipoprotein E (apoE) levels in Alzheimer's disease. *Neurosci. Lett.* 223(1), 29–32 (1997).
55. Cruchaga C, Kauwe JSK, Nowotny P *et al.* Cerebrospinal fluid APOE levels: an endophenotype for genetic studies for Alzheimer's disease. *Hum. Mol. Genet.* 21(20), 4558–4571 (2012).
56. Hesse C, Larsson H, Fredman P *et al.* Measurement of apolipoprotein E (apoE) in cerebrospinal fluid. *Neurochem. Res.* 25(4), 511–517 (2000).
57. Teunissen CE, de Vente J, Steinbusch HWM, De Bruijn C. Biochemical markers related to Alzheimer's dementia in serum and cerebrospinal fluid. *Neurobiol. Aging* 23(4), 485–508 (2002).
58. Perl DP. Neuropathology of Alzheimer's disease. *Mt Sinai J. Med.* 77(1), 32–42 (2010).

59. Verwey NA, Van Der Flier WM, Blennow K *et al.* A worldwide multicentre comparison of assays for cerebrospinal fluid biomarkers in Alzheimer's disease. *Ann. Clin. Biochem.* 46(3), 235–240 (2009).
60. Mattsson N, Zetterberg H, Hansson O *et al.* CSF biomarkers and incipient Alzheimer disease in patients with mild cognitive impairment. *JAMA* 302(4), 385–393 (2009).
61. Zetterberg H, Blennow K, Hanse E. Amyloid  $\beta$  and APP as biomarkers for Alzheimer's disease. *Exp. Gerontol.* 45(1), 23–29 (2010).
62. Hammarlund-Udenaes M, de Lange EC, Thorne RG. *Drug Delivery to the Brain*. Springer NY, USA (2014).
63. Farias ST, Mungas D, Reed BR, Harvey D, DeCarli C. Progression of mild cognitive impairment to dementia in clinic- vs community-based cohorts. *Arch. Neurol.* 66(9), 1151–1157 (2009).
64. Wishart DS. Emerging applications of metabolomics in drug discovery and precision medicine. *Nat. Rev. Drug Discov.* 15(7), 473–484 (2016).
65. Koen N, Du Preez I, Loots DT. Metabolomics and personalized medicine. *Adv. Protein Chem. Struct. Biol.* 102, 53–78 (2016).
66. González-Domínguez R, Rupérez F, García-Barrera T, Barbas C, Gómez-Ariza J. Metabolomic-driven elucidation of serum disturbances associated with Alzheimer's disease and mild cognitive impairment. *Curr. Alzheimer Res.* 13(6), 641–653 (2016).
67. Huynh RA, Mohan C. Alzheimer's disease: biomarkers in the genome, blood, and cerebrospinal fluid. *Front. Neurol.* 8, h102 (2017).
68. Sato Y, Suzuki I, Nakamura T, Bernier F, Aoshima K, Oda Y. Identification of a new plasma biomarker of Alzheimer's disease using metabolomics technology. *J. Lipid Res.* 53(3), 567–576 (2012).
69. Fiehn O. Metabolomics - the link between genotypes and phenotypes. *Plant Mol. Biol.* 48(1–2), 155–171 (2002).
70. Paglia G, Stocchero M, Cacciatore S *et al.* Unbiased metabolomic investigation of Alzheimer's disease brain points to dysregulation of mitochondrial aspartate metabolism. *J. Proteome Res.* 15(2), 608–618 (2016).
71. Kohler I, Verhoeven A, Derks RJ, Giera M. Analytical pitfalls and challenges in clinical metabolomics. *Bioanalysis* 8(14), 1509–1532 (2016).
72. Gonzalez-Riano C, Garcia A, Barbas C. Metabolomics studies in brain tissue: a review. *J. Pharm. Biomed. Anal.* 130, 141–168 (2016).
73. Trushina E, Mielke MM. Recent advances in the application of metabolomics to Alzheimer's Disease. *Biochim. Biophys. Acta Mol. Basis Dis.* 1842(8), 1232–1239 (2014).
- **Excellent review about the use of metabolomics in AD.**
74. Dedeoglu A, Choi JK, Cormier K, Kowall NW, Jenkins BG. Magnetic resonance spectroscopic analysis of Alzheimer's disease mouse brain that express mutant human APP shows altered neurochemical profile. *Brain Res.* 1012(1–2), 60–65 (2004).
75. Lalande J, Halley H, Balyassac S *et al.* 1H NMR metabolomic signatures in five brain regions of the a $\beta$ PPswe Tg2576 mouse model of Alzheimer's disease at four ages. *J. Alzheimers Dis.* 39(1), 121–143 (2014).
76. Marjańska M, Curran GL, Wengenack TM *et al.* Monitoring disease progression in transgenic mouse models of Alzheimer's disease with proton magnetic resonance spectroscopy. *Proc. Natl Acad. Sci. USA* 102(33), 11906–11910 (2005).
77. Von Kienlin M, Künnecke B, Metzger F *et al.* Altered metabolic profile in the frontal cortex of PS2APP transgenic mice, monitored throughout their life span. *Neurobiol. Dis.* 18(1), 32–39 (2005).
78. Chen SQ, Cai Q, Shen YY *et al.* Age-related changes in brain metabolites and cognitive function in APP/PS1 transgenic mice. *Behav. Brain Res.* 235(1), 1–6 (2012).
79. Lin S, Liu H, Kanawati B *et al.* Hippocampal metabolomics using ultrahigh-resolution mass spectrometry reveals neuroinflammation from Alzheimer's disease in CRND8 mice. *Anal. Bioanal. Chem.* 405(15), 5105–5117 (2013).
80. González-Domínguez R, García-Barrera T, Vitorica J, Gómez-Ariza JL. Region-specific metabolic alterations in the brain of the APP/PS1 transgenic mice of Alzheimer's disease. *Biochim. Biophys. Acta Mol. Basis Dis.* 1842(12), 2395–2402 (2014).
81. González-Domínguez R, García-Barrera T, Vitorica J, Gómez-Ariza JL. Metabolomic screening of regional brain alterations in the APP/PS1 transgenic model of Alzheimer's disease by direct infusion mass spectrometry. *J. Pharm. Biomed. Anal.* 102, 425–435 (2015).
82. Hu ZP, Browne ER, Liu T, Angel TE, Ho PC, Chan ECY. Metabonomic profiling of TASTPM transgenic Alzheimer's disease mouse model. *J. Proteome Res.* 11(12), 5903–5913 (2012).
83. Trushina E, Nemetlu E, Zhang S *et al.* Defects in mitochondrial dynamics and metabolomic signatures of evolving energetic stress in mouse models of familial Alzheimer's disease. *PLoS ONE* 7(2), e32737 (2012).
84. González-Domínguez R, García-Barrera T, Vitorica J, Gómez-Ariza JL. Application of metabolomics based on direct mass spectrometry analysis for the elucidation of altered metabolic pathways in serum from the APP/PS1 transgenic model of Alzheimer's disease. *J. Pharm. Biomed. Anal.* 107, 378–385 (2015).
85. Fukuhara K, Ohno A, Ota Y *et al.* NMR-based metabolomics of urine in a mouse model of Alzheimer's disease: identification of oxidative stress biomarkers. *J. Clin. Biochem. Nutr.* 52(2), 133–138 (2013).
86. Kimball BA, Wilson DA, Wesson DW. Alterations of the volatile metabolome in mouse models of Alzheimer's disease. *Sci. Rep.* 6, 19495 (2016).

87. Peng J, Guo K, Xia J *et al.* Development of isotope labeling liquid chromatography mass spectrometry for mouse urine metabolomics: quantitative metabolomic study of transgenic mice related to Alzheimer's disease. *J. Proteome Res.* 13(10), 4457–4469 (2014).
88. Tang Z, Liu L, Li Y *et al.* Urinary metabolomics reveals alterations of aromatic amino acid metabolism of Alzheimer's disease in the transgenic CRND8 mice. *Curr. Alzheimer Res.* 13(7), 764–776 (2016).
89. Kaddurah-Daouk R, Zhu H, Sharma S *et al.* Alterations in metabolic pathways and networks in Alzheimer's disease. *Transl. Psychiatry* 3(4), e244 (2013).
90. Trushina E, Dutta T, Persson XMT, Mielke MM, Petersen RC. Identification of altered metabolic pathways in plasma and CSF in mild cognitive impairment and Alzheimer's disease using metabolomics. *PLoS ONE* 8(5), e63644 (2013).
91. Samakashvili S, Ibáñez C, Simó C *et al.* Analysis of chiral amino acids in cerebrospinal fluid samples linked to different stages of Alzheimer disease. *Electrophoresis* 32(19), 2757–2764 (2011).
92. Ibáñez C, Simó C, Martín-Álvarez PJ *et al.* Toward a predictive model of Alzheimer's disease progression using capillary electrophoresis-mass spectrometry metabolomics. *Anal. Chem.* 84(20), 8532–8540 (2012).
93. Ibáñez C, Simó C, Barupal DK *et al.* A new metabolomic workflow for early detection of Alzheimer's disease. *J. Chromatogr. A* 1302, 65–71 (2013).
94. Czech C, Berndt P, Busch K *et al.* Metabolite profiling of Alzheimer's disease cerebrospinal fluid. *PLoS ONE* 7(2), e31501 (2012).
95. Nicolì F, Vion-Dury J, Confort-Gouny S, Maillat S, Gastaut JL, Cozzone PJ. Cerebrospinal fluid metabolic profiles in multiple sclerosis and degenerative dementias obtained by high resolution proton magnetic resonance spectroscopy. *CR Acad. Sci. III* 319(7), 623–631 (1996).
96. Jukarainen NM, Korhonen SP, Laakso MP *et al.* Quantification of <sup>1</sup>H NMR spectra of human cerebrospinal fluid: a protocol based on constrained total-line-shape analysis. *Metabolomics*. 4(2), 150–160 (2008).
97. Fonteh AN, Harrington RJ, Tsai A, Liao P, Harrington MG. Free amino acid and dipeptide changes in the body fluids from Alzheimer's disease subjects. *Amino Acids* 32(2), 213–224 (2007).
98. Casanova R, Varma S, Simpson B *et al.* Blood metabolite markers of preclinical Alzheimer's disease in two longitudinally followed cohorts of older individuals. *Alzheimers Dement.* 12(7), 815–822 (2016).
99. Greenberg N, Grassano A, Thambisetty M, Lovestone S, Legido-Quigley C. A proposed metabolic strategy for monitoring disease progression in Alzheimer's disease. *Electrophoresis* 30(7), 1235–1239 (2009).
100. Chouraki V, Preis SR, Yang Q *et al.* Association of amine biomarkers with incident dementia and Alzheimer's disease in the Framingham Study. *Alzheimers Dement.* 13(12), 1327–1336 (2017).
101. Ansoleaga B, Jové M, Schlüter A *et al.* Deregulation of purine metabolism in Alzheimer's disease. *Neurobiol. Aging* 36(1), 68–80 (2015).
102. Liu P, Fleete MS, Jing Y *et al.* Altered arginine metabolism in Alzheimer's disease brains. *Neurobiol. Aging* 35(9), 1992–2003 (2014).
103. Inoue K, Tsutsui H, Akatsu H *et al.* Metabolic profiling of Alzheimer's disease brains. *Sci. Rep.* 3(1), 2364 (2013).
104. Botosoa EP, Zhu M, Marbeuf-Gueye C *et al.* NMR metabolomic of frontal cortex extracts: first study comparing two neurodegenerative diseases, Alzheimer disease and amyotrophic lateral sclerosis. *IRBM* 33(5–6), 281–286 (2012).
105. Takayama T, Mochizuki T, Todoroki K *et al.* A novel approach for LC–MS/MS–based chiral metabolomics fingerprinting and chiral metabolomics extraction using a pair of enantiomers of chiral derivatization reagents. *Anal. Chim. Acta* 898, 73–84 (2015).
106. Sato Y, Nakamura T, Aoshima K, Oda Y. Quantitative and wide-ranging profiling of phospholipids in human plasma by two-dimensional liquid chromatography/mass spectrometry. *Anal. Chem.* 82(23), 9858–9864 (2010).
107. Wisniewski T, Newman K, Javitt NB. Alzheimer's disease: Brain desmosterol levels. *J. Alzheimers Dis.* 33(3), 881–888 (2013).
108. Li N, jing, Liu W, tao, Li W *et al.* Plasma metabolic profiling of Alzheimer's disease by liquid chromatography/mass spectrometry. *Clin. Biochem.* 43(12), 992–997 (2010).
109. Astarita G, Jung K-M, Vasilevko V *et al.* Elevated stearoyl-CoA desaturase in brains of patients with Alzheimer's disease. *PLoS ONE* 6(10), e24777 (2011).
110. Proitsi P, Kim M, Whitley L *et al.* Association of blood lipids with Alzheimer's disease: a comprehensive lipidomics analysis. *Alzheimers Dement.* 13(2), 140–151 (2017).
111. Whitley L, Sen A, Heaton J *et al.* Evidence of altered phosphatidylcholine metabolism in Alzheimer's disease. *Neurobiol. Aging* 35(2), 271–278 (2014).
112. Wood PL, Locke VA, Herling P *et al.* Targeted lipidomics distinguishes patient subgroups in mild cognitive impairment (MCI) and late onset Alzheimer's disease (LOAD). *BBA Clin.* 5, 25–28 (2016).
113. Pettegrew JW, Panchalingam K, Hamilton RL, McClure RJ. Brain membrane phospholipid alterations in Alzheimer's disease. *Neurochem. Res.* 26(7), 771–782 (2001).
114. Cutler RG, Kelly J, Storie K *et al.* Involvement of oxidative stress-induced abnormalities in ceramide and cholesterol metabolism in brain aging and Alzheimer's disease. *Proc. Natl Acad. Sci.* 101(7), 2070–2075 (2004).

115. Hejazi L, Wong JWH, Cheng D *et al.* Mass and relative elution time profiling: two-dimensional analysis of sphingolipids in Alzheimer's disease brains. *Biochem. J.* 438(1), 165–175 (2011).
116. Han X, Rozen S, Boyle SH *et al.* Metabolomics in early Alzheimer's disease: identification of altered plasma sphingolipidome using shotgun lipidomics. *PLoS ONE* 6(7), e21643 (2011).
117. González-Domínguez R, García-Barrera T, Gómez-Ariza JL. Combination of metabolomic and phospholipid-profiling approaches for the study of Alzheimer's disease. *J. Proteomics* 104, 37–47 (2014).
118. Cunnane SC, Schneider JA, Tangney C *et al.* Plasma and brain fatty acid profiles in mild cognitive impairment and Alzheimer's disease. *J. Alzheimer's Dis.* 29(3), 691–697 (2012).
119. Martín V, Fabelo N, Santpere G *et al.* Lipid alterations in lipid rafts from Alzheimer's disease human brain cortex. *J. Alzheimer's Dis.* 19(2), 489–502 (2010).
120. Tukiainen T, Tynkkynen T, Mäkinen VP *et al.* A multi-metabolite analysis of serum by <sup>1</sup>H NMR spectroscopy: early systemic signs of Alzheimer's disease. *Biochem. Biophys. Res. Commun.* 375(3), 356–361 (2008).
121. Kohler I, Giera M. Recent advances in liquid-phase separations for clinical metabolomics. *J. Sep. Sci.* 40(1), 93–108 (2017).
122. De Malsche W, De Bruyne S, Op De Beek J *et al.* Separations using a porous-shell pillar array column on a capillary LC instrument. *J. Sep. Sci.* 35(16), 2010–2017 (2012).
123. Op De Beek J, Callewaert M, Ottevaere H, Gardeniers H, Desmet G, De Malsche W. On the advantages of radially elongated structures in microchip-based liquid chromatography. *Anal. Chem.* 85(10), 5207–5212 (2013).
124. Sandra K, Vandenbussche J, T'Kindt R *et al.* Evaluation of micro-pillar array columns (μPAC) combined with high resolution mass spectrometry for lipidomics. *LC GC Spec. Issues* 30(6), 6–13 (2017).
125. Zhang W, Hankemeier T, Ramautar R. Next-generation capillary electrophoresis–mass spectrometry approaches in metabolomics. *Curr. Opin. Biotechnol.* 43, 1–7 (2017).
126. Anand S, Barnes JM, Young SA *et al.* Discovery and confirmation of diagnostic serum Lipid biomarkers for Alzheimer's disease using direct infusion mass spectrometry. *J. Alzheimers Dis.* 59(1), 277–290 (2017).
127. González-Domínguez R, Sayago A, Fernández-Recamales Á. Direct infusion mass spectrometry for metabolomic phenotyping of diseases. *Bioanalysis* 9(1), 131–148 (2017).
128. Biasioli F, Yeretizian C, Märk TD, Dewulf J, Van Langenhove H. Direct-injection mass spectrometry adds the time dimension to (B)VOC analysis. *TrAC* 30(7), 1003–1017 (2011).
129. Abdelnur PV, Caldana C, Martins MCM. Metabolomics applied in bioenergy. *Chem. Biol. Technol. Agric.* 1(1), 22 (2014).
130. Hoffmann W, von Helden G, Pagel K. Ion mobility-mass spectrometry and orthogonal gas-phase techniques to study amyloid formation and inhibition. *Curr. Opin. Struct. Biol.* 46, 7–15 (2017).
131. Dunkley T, Coon KD, Stephan DA. Discovery and development of biomarkers of neurological disease. *Drug Discov. Today* 10(5), 326–334 (2005).
132. St John-Williams L, Blach C, Toledo JB *et al.* Targeted metabolomics and medication classification data from participants in the ADNI1 cohort. *Sci. Data* 4, 170140 (2017).
133. Mäkinen V-P, Ala-Korpela M. Metabolomics of aging requires large-scale longitudinal studies with replication. *Proc. Natl Acad. Sci. USA* 113(25), E3470–E3470 (2016).
134. Daugherty D, Goldberg J, Fischer W, Dargusch R, Maher P, Schubert D. A novel Alzheimer's disease drug candidate targeting inflammation and fatty acid metabolism. *Alzheimers. Res. Ther.* 9(1), 50 (2017).
135. Pan X, Elliott CT, McGuinness B *et al.* Metabolomic profiling of bile acids in clinical and experimental samples of Alzheimer's disease. *Metabolites* 7(2), (2017).
136. Dionísio PA, Amaral JD, Ribeiro MF, Lo AC, D'Hooge R, Rodrigues CMP. Amyloid-β pathology is attenuated by tauroursodeoxycholic acid treatment in APP/PS1 mice after disease onset. *Neurobiol. Aging* 36(1), 228–240 (2015).
137. Sastre M, Ritchie CW, Hajji N. Metal ions in Alzheimer's disease brain. *JSM Alzheimer's Dis Relat. Dement.* 2(1), 1014 (2015).
138. Peters DG, Connor JR, Meadowcroft MD. The relationship between iron dyshomeostasis and amyloidogenesis in Alzheimer's disease: two sides of the same coin. *Neurobiol. Dis.* 81, 49–65 (2015).
139. Graham SF, Bin Nasaruddin M, Carey M *et al.* Age-associated changes of brain copper, iron, and zinc in Alzheimer's disease and dementia with Lewy bodies. *J. Alzheimer's Dis.* 42(4), 1407–1413 (2014).
140. Paglia G, Miedico O, Cristofano A *et al.* Distinctive pattern of serum elements during the progression of Alzheimer's disease. *Sci. Rep.* 6(1), 22769 (2016).
141. Schrag M, Mueller C, Oyoyo U, Smith MA, Kirsch WM. Iron, zinc and copper in the Alzheimer's disease brain: a quantitative meta-analysis. Some insight on the influence of citation bias on scientific opinion. *Prog. Neurobiol.* 94(3), 296–306 (2011).
142. González-Domínguez R, García-Barrera T, Gómez-Ariza JL. Characterization of metal profiles in serum during the progression of Alzheimer's disease. *Metallomics.* 6(2), 292–300 (2014).

143. Yassine HN, Braskie MN, Mack WJ *et al.* Association of docosahexaenoic acid supplementation with Alzheimer disease stage in apolipoprotein E  $\epsilon$ 4 carriers: a review. *JAMA Neurol.* 74(3), 339–347 (2017).

For reprint orders, please contact: [reprints@future-science.com](mailto:reprints@future-science.com)

# Metabolic profiling in the arena of gut–brain interaction studies for Alzheimer’s disease

Deda Olga<sup>1,2</sup> & Gika G Helen<sup>\*,1,2</sup>

<sup>1</sup>Laboratory of Forensic Medicine & Toxicology, Department of Medicine, Aristotle University of Thessaloniki, Thessaloniki 54124, Greece

<sup>2</sup>Biomic\_Auth, Bioanalysis & Omics Lab, Centre for Interdisciplinary Research of Aristotle University of Thessaloniki, Innovation Area of Thessaloniki, Thessaloniki 57001, Greece

\*Author for correspondence: [gkikae@auth.gr](mailto:gkikae@auth.gr)

First draft submitted: 13 March 2020; Accepted for publication: 30 March 2020; Published online: 30 April 2020

**Keywords:** Alzheimer’s disease • gut–brain interaction • metabolic profiling • metabolites

Since 400 BC, Hippocrates theorized that ‘bad digestion is the root of all evil’ [1], while from the dawn of the twentieth century, Elie Metchnikoff, winner of the Nobel Prize speculated that gut microbiome manipulation with host-friendly bacteria, like those found in yogurt could prove to be the ‘elixir’ of long life [2]. Recent technological advantages highlighted the impact of gut microbiome on human health and facilitated the emergence of these concepts as core research fields. The scientific community nowadays characterizes this large reservoir of microbes that coexist in the intestinal epithelium as hyper or hidden ‘organ’ and ‘symbiome’, recognizing its great importance in the implementation of crucial metabolic reactions. Moreover, the exponentially increasing amount of publications, which are added in a large catalogue of studies, relating various human diseases to the imbalanced symbiosis with the host, proves that this is advancing to a hot research topic [3].

Very recently, strong evidence demonstrated the direct relationship between the brain and the enteric nervous system characterized as the ‘second brain’ [4]. Grounded on an interaction axis, via several biochemical pathways, intestinal microbiome affects neurological and behavioral processes of the brain and is involved in neurodevelopment and neurodegenerative disorders, especially those associated with aging. Aging is a progressive deteriorating process accompanied with structural and functional alteration in the gut microbiome, including degeneration of the enteric nervous system, deterioration of intestinal mucosal defense and alterations to the descending digestion and permeability.

Alzheimer’s disease (AD), the most common neurodegenerative disorder in the aging population, has lately been studied on the basis of gut–brain axis and questions have arisen on the relation of microbiota dysbiosis with AD pathogenesis [5]. AD is associated with impaired cognition and cerebral accumulation of amyloid- $\beta$  peptides. The imbalanced microbiome can produce large amounts of amyloids and lipopolysaccharides, which might contribute to the modulation of signaling pathways and induce inflammation associated to the pathogenesis of AD [5]. Additionally, all the microbial metabolically bioactive end products that reach the brain through the bloodstream and the area postrema are involved in signal transduction. Imbalance of metabolic processes in the gut may be well linked to loss of cholinergic function and weakness of signal transduction following neuronal cell death in the hippocampus cerebral cortex [6].

Nowadays, AD onset is particularly prevalent in Western countries [7]. The increased numbers of new cases is unprecedented and the expenses that burden the public health system and the patients’ family environment are enormous. The cost of dementia care for 50 million patients worldwide, estimated is to be comparable to the world’s 18th largest economy [8]. Thus, the investigation of mechanisms leading to AD pathogenesis is of utmost importance.

Metabolomics can provide deep insight into the complex metabolic phenotype of the disease and can capture the whole picture regarding gut microbiome metabolic interactions. For these reasons, metabolomics is a promising approach for contributing to the elucidation of pathophysiological events associated with AD and ideally to the prevention/reversal of the disease progress [9].

## Metabolomics perspective

A Scopus search using the entries 'Brain', 'Gut microbiome' and 'AD' results in more than 130 studies published from 2016 to 2020 (January). Among these studies genomics and proteomics dominate in the investigation of the gut–brain interactions and AD [10], while fewer metabolomics studies, 11 in total, could be identified [4,11–16].

Metabolomics aim to reliably detect and quantify several thousand small molecules existing in the human body that participate in biochemical processes. Metabolic profiling can detect perturbation in metabolic homeostasis, due to external stimulus such as dysbiosis or the administration of drugs [17].

Using state of the art analytical technologies, metabolomics aim to reveal mechanisms of disease and underlying biochemistry. Identifying perturbations of the metabolic phenotype is the aim, and the ultimate goal is to find specific metabolites that could serve as early biomarkers, predicting the initiation of disease or as diagnostic biomarkers, monitoring its manifestation.

To achieve these purposes various types of biological specimens including CSF are analyzed by advanced analytical platforms [4]. The most commonly applied analytical platform is LC coupled to Q–TOF MS [12,16] or Orbitrap–MS [13,14]. In such studies samples from AD animal models are analyzed against control samples either by high resolution mass spectrometry hyphenated to a liquid chromatographic system to obtain a comprehensive metabolic profile [13,14,16] or by targeted methods developed to quantify metabolites related to AD pathobiology such as neurotransmitters, metabolites related to the gut co-metabolism like aromatic amino acids and others [11,12]. In the case of untargeted metabolic profiling data, multivariate statistical methods are applied to identify metabolic alterations and facilitate the discovery of potential biomarkers.

Biochemical interpretation of the perturbed metabolome reveals the impact of the gut–brain interaction in AD, highlighting the involvement of amino acids metabolism (taurine and hypotaurine, arginine and proline, phenylalanine and tyrosine, tryptophan,  $\beta$ -alanine), metabolism of cofactors and vitamins (vitamin-B6) nucleotide metabolism (purines and pyrimidines), TCA cycle, as well as glycerophospholipids and fatty acids metabolism [4]. Furthermore, bile acids metabolism perturbation was highlighted in the study of gut–brain and AD [11].

The recorded changes in fundamental energy fuels indicated that the influence of intestinal bacterial activity on the whole metabolome is capable of affecting energy production and signal transduction of the host. The levels of neurotransmitter serotonin in the brain, derived from the precursor amino acid tryptophan, are directly regulated from the blood–brain barrier preventing the release of serotonin in the blood [18]. Additional examples of metabolites related to gut microbiome are glycine,  $\gamma$ -amino butyric acid (that are directly neuroactive) or choline that is a precursor of the major neurotransmitter acetylcholine. Catabolic end products of polysaccharides, precursors of biosynthetic routes of several B-vitamin complexes and polypeptides derived from amino acid conversion, are some additional examples of metabolites mediated by bacterial enzymatic activity [19].

GC–MS offers the advantage of measuring smaller molecules and has been extensively applied to measure short-chain fatty acids and other polar metabolites such as neurotransmitters, polyunsaturated fatty acids, amines and amino acids; all representing molecules of high importance in the gut–brain axis [4].

The future in the arena of gut–brain interaction studies for the AD is the parallel application of complementary cutting-edge analytical platforms in order to cover various chemical classes involved in the co-metabolism occurring in the gut, thus acquiring a more comprehensive picture of the complex symbiotic metabolome. This would require the capability to profile amino acids, indoles, polyunsaturated fatty acids, short chain fatty acids, polyamines, methylamines, polyphenolics, vitamins, organic acids, carbohydrates, bile acids and other metabolites. Undoubtedly, high throughput RNA sequencing data should be combined with the metabolic profiling data in order to come closer to the mechanisms and pathophysiology of neurodegenerative processes that are triggered by the metabolic products of intestinal symbiome. However, there are burdens in merging, correlating and translating data from different platforms, thus this step represents a significant challenge and needs further research and development. Should these challenges be overcome, the combined metabolomics-based approach might be an ultimate tool for the screening of various biological samples, filling the gap of classical diagnostic tests.

Despite the remarkable scientific progress, AD represents a serious threat and deteriorates the life of aging population. After decades of research and hundreds of clinical trials, the clinical approach of AD is to this day narrow and very few drugs are commercially available, whereas brain biopsy still constitutes the choice for the absolute diagnosis of the disease. Although animal models have provided useful data for the investigation of disease mechanism and potential therapeutic approaches, findings cannot be easily translated to human pathophysiology. Manipulation of the intestinal symbiome to regulate brain signal transduction pathways may prove very auspicious

for the inhibition of AD progression and the restriction of its prevalence. Metabolic profiling studies endeavor toward that direction.

## Conclusion

Metabolic profiling approaches that utilized modern and sensitive analytical systems, capable of detecting metabolites even in infinitesimal concentrations, have not yet achieved all their potential in this emerging field. It is believed that metabolic profiling has much more to offer by describing host–gut microbiota interactions through the metabolic phenotype of various biological specimens. Multianalytical, or even multi -omics platforms, should be integrated for a global view of host–microbiome interaction affecting host biological functions, and in this case brain function. Evidence-based manipulation of gut microbiome with beneficial factors, such as nutrition based on natural products (omega-3 fatty acids, probiotics and others) or physical activity, could be a priority to ameliorate healthcare against neurological diseases, such as AD [20].

## Financial & competing interests disclosure

The authors have no relevant affiliations or financial involvement with any organization or entity with a financial interest in or financial conflict with the subject matter or materials discussed in the manuscript. This includes employment, consultancies, honoraria, stock ownership or options, expert testimony, grants or patents received or pending, or royalties.

No writing assistance was utilized in the production of this manuscript.

## References

1. Sekirov I, Russell SL, Antunes LCM, Finlay BB. Gut microbiota in health and disease. *Physiol. Rev.* 90(3), 859–904 (2010).
2. Mackowiak PA. Recycling Metchnikoff: probiotics, the intestinal microbiome and the quest for long life. *Front Public Health* 1, 52 (2013). <https://www.frontiersin.org/article/10.3389/fpubh.2013.00052> DOI=10.3389/fpubh.2013.00052 ISSN=2296-2565
3. Durack J, Lynch SV. The gut microbiome: relationships with disease and opportunities for therapy. *J. Exp. Med.* 216(1), 20–40 (2019).
4. Luan H, Wang X, Cai Z. Mass spectrometry-based metabolomics: targeting the crosstalk between gut microbiota and brain in neurodegenerative disorders. *Mass Spectrom. Rev.* 38(1), 22–33 (2019).
5. Jiang C, Li G, Huang P, Liu Z, Zhao B. The gut microbiota and Alzheimer’s disease. *J. Alzheimers Dis.* 58(1), 1–15 (2017).
6. Alkaser R, Li J, Li X, Jin M, Zhu B. Human gut microbiota: the links with dementia development. *Protein Cell* 8(2), 90–102 (2017).
7. Rizzi L, Rosset I, Roriz-Cruz M. Global epidemiology of dementia: Alzheimer’s and vascular types. *Biomed. Res. Int.* (2014). <https://doi.org/10.1155/2014/908915>
8. Alzheimer’s Disease International. State of the art in Alzheimer’s care, support, and research featured at 25th conference of Alzheimer’s disease international (2010). <http://www.alz.co.uk/media/100329>
9. Chen MX, Wang S-Y, Kuo C-H, Tsai I-L. Metabolome analysis for investigating host-gut microbiota interactions. *J. Formos. Med. Assoc.* 118(Suppl. 1), S10–S22 (2018).
10. Henriksen K, O’Byrant SE, Hampel H *et al.* The future of blood-based biomarkers for Alzheimer’s disease. *Alzheimers Dement.* 10(1), 115–131 (2014).
11. Nho K, Kueider-Paisley A, MahmoudianDehkordi S *et al.* Altered bile acid profile in mild cognitive impairment and Alzheimer’s disease: relationship to neuroimaging and CSF biomarkers. *Alzheimer Dement.* 15(2), 232–244 (2019).
12. Liu Y, Wei M, Yue K *et al.* Study on urine metabolic profile of A $\beta$ 25–35-induced Alzheimer’s disease using UHPLC-Q-TOF-MS. *Neuroscience* 394(1), 30–43 (2018).
13. Xin Y, Diling C, Jian Y *et al.* Effects of oligosaccharides from morinda officinalis on gut microbiota and metabolome of APP/PS1 transgenic mice. *Front. Neurol.* 9, 412 (2018). <https://www.frontiersin.org/article/10.3389/fneur.2018.00412> DOI=10.3389/fneur.2018.00412 ISSN=1664-2295
14. Tang Z, Liu L, Li Y *et al.* Urinary metabolomics reveals alterations of aromatic amino acid metabolism of Alzheimer’s disease in the transgenic CRND8 mice. *Curr. Alzheimer Res.* 13(7), 764–776 (2016).
15. Obrenovich M, Flückiger R, Sykes L, Donskey C. The co-metabolism within the gut–brain metabolic interaction: potential targets for drug treatment and design. *CNS Neurol. Disord. Drug Targets* 15(2), 127–134 (2016).
16. Weng R, Shen S, Tian Y *et al.* Metabolomics approach reveals integrated metabolic network associated with serotonin deficiency. *Sci. Rep.* 5, 11864 (2015).
17. Deda O, Virgiliou C, Orfanidis A, Gika HG. Study of fecal and urinary metabolite perturbations induced chronic ethanol treatment in mice by UHPLC-MS/MS targeted profiling. *Metabolites* 9(10), 232 (2019).
18. Jenkins TA, Nguyen JCD, Polglaze KE, Bertrand PP. Influence of tryptophan and serotonin on mood and cognition with a possible role of the gut–brain axis. *Nutrients* 8(1), 56 (2016).



19. Nicholson JK, Holmes E, Kinross J *et al.* Host-gut microbiota metabolic interactions. *Science* 336(6086), 1262–1267 (2012).
20. Kowalski K, Mulak A. Brain-gut-microbiota axis in Alzheimer's disease. *J Neurogastroenterol Motil.* 25(1), 48–60 (2019).



## Contact us

Editorial Department

[editor@bioanalysis-zone.com](mailto:editor@bioanalysis-zone.com)

Business Development and Support

[advertising@future-science-group.com](mailto:advertising@future-science-group.com)